



17 Leighton Court Copperdale Close
Earley, RG6 5SG



Guide price £230,000 Leasehold



[VillageProperties.co.uk](https://www.villageproperties.co.uk)

17 Leighton Court Copperdale Close

DESCRIPTION:

VP - NO ONWARD CHAIN & 360 VIRTUAL TOUR.

Presented to the market is this two double bedroom top floor apartment with no onward chain complications and within easy access to local bus routes, Reading University, amenities, local schools and parks. The property comprises entrance hallway, kitchen, living/dining room with a balcony, two bedrooms and a bathroom. Externally there is a garage nearby.

Additional Information - Upon completion following will apply:
A new lease of 250 years.
Service charge: £1,450 PA
Ground rent: £0
Council tax band - B

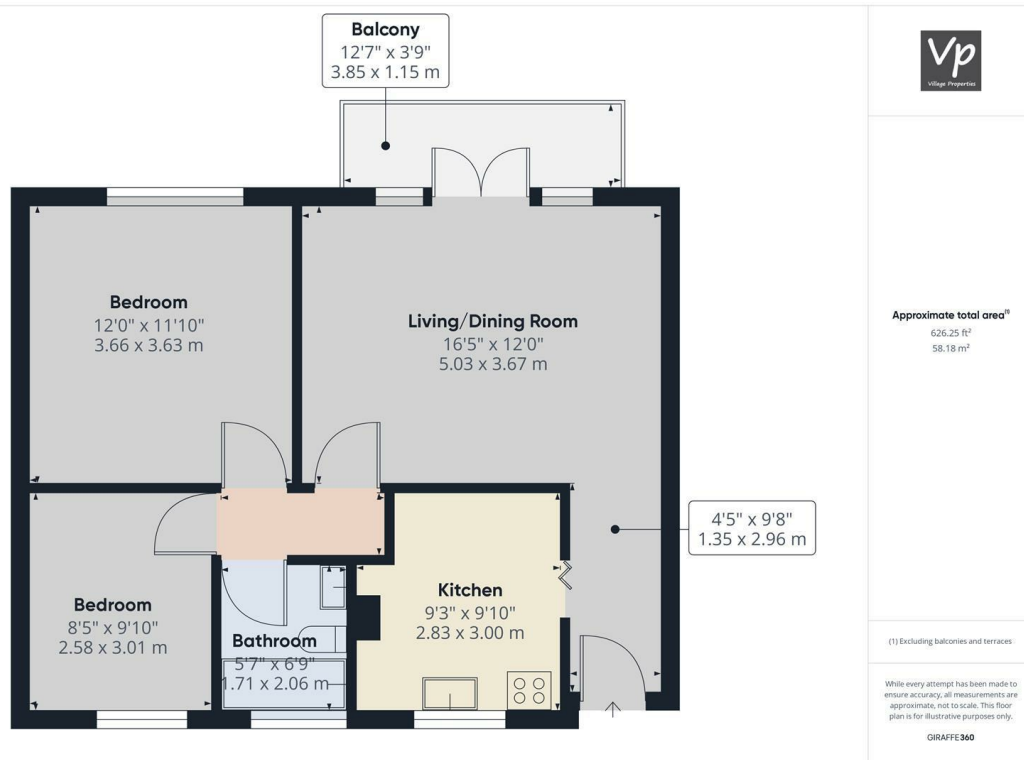
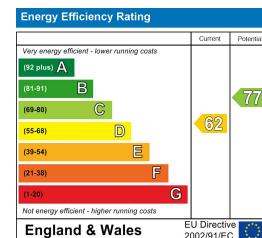
SUMMARY OF ACCOMMODATION:

- BRAND NEW LEASE 250 YEARS
- TWO BEDROOMS
- BALCONY
- NO ONWARD CHAIN
- GARAGE IN BLOCK
- 360 VIRTUAL TOUR

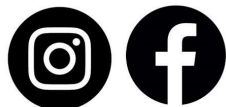
ADDITIONAL INFO:

VIEWING STRICTLY BY APPOINTMENT:

T: 0118 941 5607
E: sales@villageproperties.org
W: www.villageproperties.co.uk



Get Social



92 School Road
Reading
RG31 5AU