



31 Burrcroft Court
, RG30 2ET

Guide price £200,000 Leasehold



[VillageProperties.co.uk](https://www.villageproperties.co.uk)

31 Burrcroft Court

DESCRIPTION:

VP - NO ONWARD CHAIN & 360 VIRTUAL TOUR.

Presented to the market is this two bedroom bungalow for buyers 55 years old and above. The property comprises entrance hallway, two bedrooms, fitted shower room, living room and kitchen. There is also a patio door leading out to a communal garden area. There is an allocated parking space for the property.

Burrcroft Court has excellent access to bus routes, amenities, supermarket, parks and Junction 12 M4.

Other benefits include UPVC double glazed windows, electric heating, on site facilities including a residents laundry room and a on call' 24 hour assistance. This property is ready for immediate occupation.

Lease Term:- 89 years remaining

Ground Rent & Service Charges:- Circa£210. PM

Reading Borough Council - Band C

SUMMARY OF ACCOMMODATION:

- OVER 55'S
- TWO BEDROOMS
- 360 VIRTUAL TOUR
- BUNGALOW
- NO ONWARD CHAIN
- PARKING

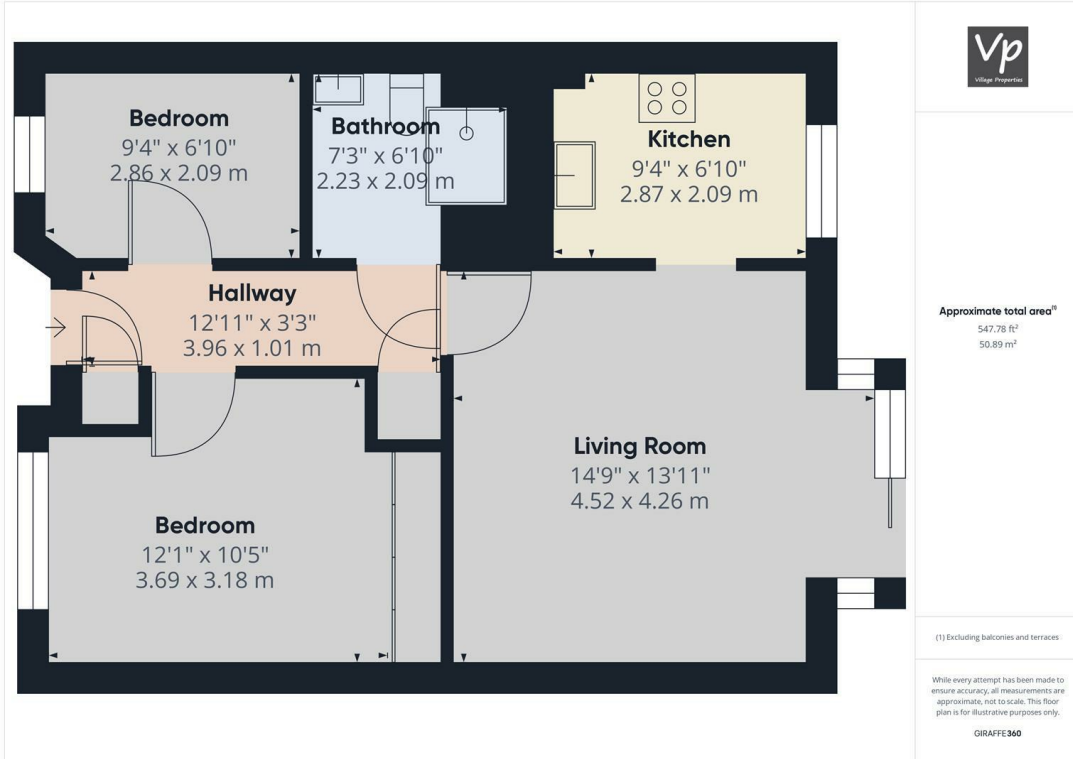
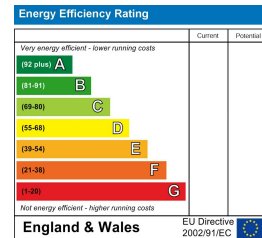
ADDITIONAL INFO:

VIEWING STRICTLY BY APPOINTMENT:

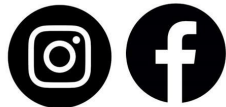
T: 0118 941 5607

E: sales@villageproperties.org

W: www.villageproperties.co.uk



Get Social



92 School Road
Reading
RG31 5AU