



Spring Lodge,
Spring Woods, Virginia Water



An exceptional family house built to an exacting specification and completed in 2005 with spacious accommodation over four floors.

Spring Lodge, Spring Woods GU25 4PW

- ♦ A totally unique and spectacular family home built in 2005 on the main island of the world-renowned Wentworth Estate.
 - ♦ Tucked away at the end of a no-through road.
 - ♦ Stunning Orangery.
- ♦ Set in secluded gardens of approximately 1 acre with a sunny southerly aspect at the rear.
- ♦ Well-proportioned reception rooms which can be opened up for entertaining.
 - ♦ Staff apartment.
- ♦ Magnificent master bedroom suite with his and hers dressing rooms and bathrooms.

Situation

The property is superbly situated on the Wentworth Estate's 'Main Island' in a quiet cul-de-sac, yet just 10 minutes' walk from the clubhouse or the picturesque shopping parades of Virginia Water and the train station. Nearby there is beautiful scenery in Virginia Water Lake and Windsor Great Park which provide the perfect backdrop for walks. The M4/M3 and Heathrow Airport are also close at hand. There are excellent schools in the area including two international schools.



Additional Information

Postcode: GU25 4PW

Tenure: Freehold

Council Tax Band: H

Local Authority: Runnymede Borough Council

Fixtures and Fittings: Carpets, curtains, kitchen and utility appliances by separate negotiation.

Viewing: Strictly by appointment with

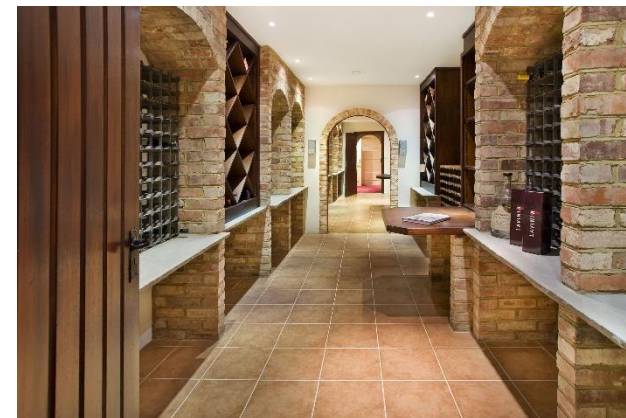
Barton Wyatt:

homes@bartonwyatt.co.uk

01344 843000

Energy Performance:

A copy of the full Energy Performance Certificate is available upon request.

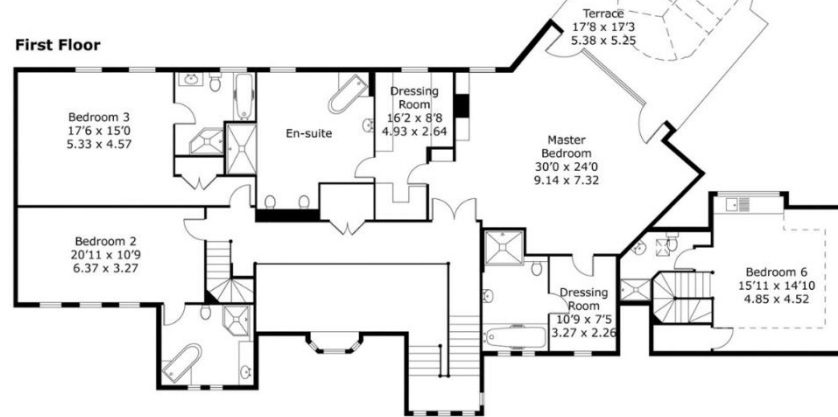


Spring Lodge, Springs Woods, Wenworth Estate

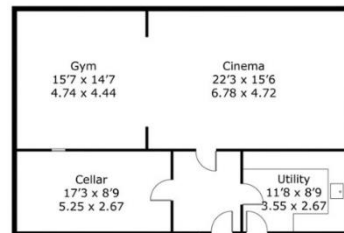
Approximate gross internal area: 741 sq m / 7970 sq ft



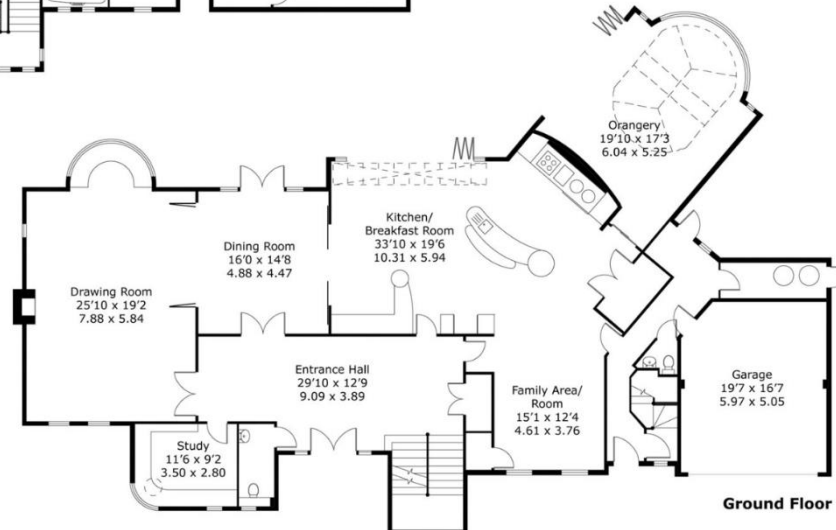
First Floor



Second Floor



Lower Ground Floor



Ground Floor

Ref: SLBW010304111

Not to Scale. Any Areas, measurements or distances given are maximum and approximate only, no decisions without checking should be made when reliant upon them.



BARTON · WYATT

The Estate Office, Station Approach, Virginia Water, Surrey, GU25 4DL

01344 843000

homes@bartonwyatt.co.uk

bartonwyatt.co.uk