



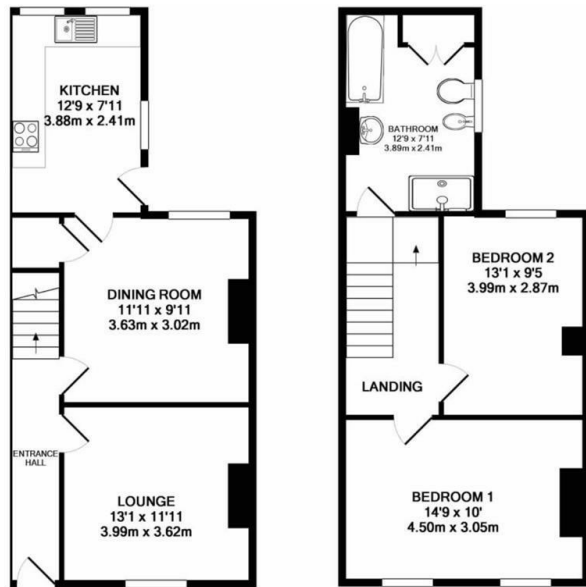
21 Victoria Street, Ely, CB6 1LU
£1,150 Per Month



 david clark
& company



Accommodation



GROUND FLOOR
APPROX. FLOOR
AREA 445 SQ.FT.
(41.3 SQ.M.)

1ST FLOOR
APPROX. FLOOR
AREA 443 SQ.FT.
(41.2 SQ.M.)

TOTAL APPROX. FLOOR AREA 888 SQ.FT. (82.5 SQ.M.)

Whilst every attempt has been made to ensure the accuracy of the floor plan contained here, measurements of doors, windows, rooms and any other items are approximate and no responsibility is taken for any error, omission, or mis-statement. This plan is for illustrative purposes only and should be used as such by any prospective purchaser. The services, systems and appliances shown have not been tested and no guarantee as to their operability or efficiency can be given
Made with Metropix ©2019

Viewing

Please contact our Lettings Office on 01353 665020 if you wish to arrange a viewing appointment for this property or require further information.

These particulars, whilst believed to be accurate are set out as a general outline only for guidance and do not constitute any part of an offer or contract. Intending purchasers should not rely on them as statements of representation of fact, but must satisfy themselves by inspection or otherwise as to their accuracy. No person in this firm's employment has the authority to make or give any representation or warranty in respect of the property.

Energy Efficiency Rating		Environmental Impact (CO ₂) Rating	
Current	Potential	Current	Potential
<p>Very energy efficient - lower running costs</p> <p>(92 plus) A</p> <p>(81-91) B</p> <p>(69-80) C</p> <p>(55-68) D</p> <p>(39-54) E</p> <p>(21-38) F</p> <p>(1-20) G</p> <p>Not energy efficient - higher running costs</p>		<p>Very environmentally friendly - lower CO₂ emissions</p> <p>(82 plus) A</p> <p>(61-81) B</p> <p>(49-60) C</p> <p>(35-48) D</p> <p>(21-38) E</p> <p>(1-20) F</p> <p>Not environmentally friendly - higher CO₂ emissions</p>	
	84		
<p>EU Directive 2002/91/EC</p> <p>England & Wales</p>		<p>EU Directive 2002/91/EC</p> <p>England & Wales</p>	