



PETERMANS  
LOCAL PROPERTY EXPERTS



## Centurion House, Station Road, Edgware £450,000 Share Of Freehold

- Two Bedroom, Two Bathroom Sixth Floor Penthouse Apartment
- Opposite Edgware Station & Broadwalk
- Spacious Reception Room With Access To Terrace Area
- Separate Fitted Kitchen
- En-Suite Shower Room To Master Bedroom
- Bathroom
- Two Allocated Parking Spaces In Underground Car Park
- No Chain
- 1,120 Sq Ft

8 THE PROMENADE, EDGWAREBURY LANE, EDGWARE, MIDDLESEX HA8 7JZ  
t: 020 8958 5040 e: [edgware@petermans.co.uk](mailto:edgware@petermans.co.uk) w: [www.petermans.co.uk](http://www.petermans.co.uk)



Petermans for themselves and for the vendors or lessors of this property for whom they act, give notice that i) these particulars are a general outline only, for the guidance of prospective purchasers or tenants, and do not constitute the whole or any part of an offer or contract, ii) Petermans cannot guarantee the accuracy of any description, dimensions, references to condition, necessary permissions for use and occupation, and other details contained herein, and prospective purchasers or tenants must not rely on them as statements of fact, and must satisfy themselves as to their accuracy, iii) no employee of Petermans has any authority to make or give any or representation or warranty or enter into any contract whatever in relation to the property, iv) rents, prices, premiums and service charge quoted in these particulars may be subject to VAT in addition, and v) Petermans will not be liable, in negligence or otherwise, for any loss arising from the use of these particulars.



We are delighted to offer this bright, 2 bedroom, 2 bathroom, penthouse apartment, with private terrace with amazing unobstructed views, in the heart of Edgware, opposite Edgware Station & Broadwalk. Providing extremely convenient access to local shops, restaurants, places of worship and Edgware Station.



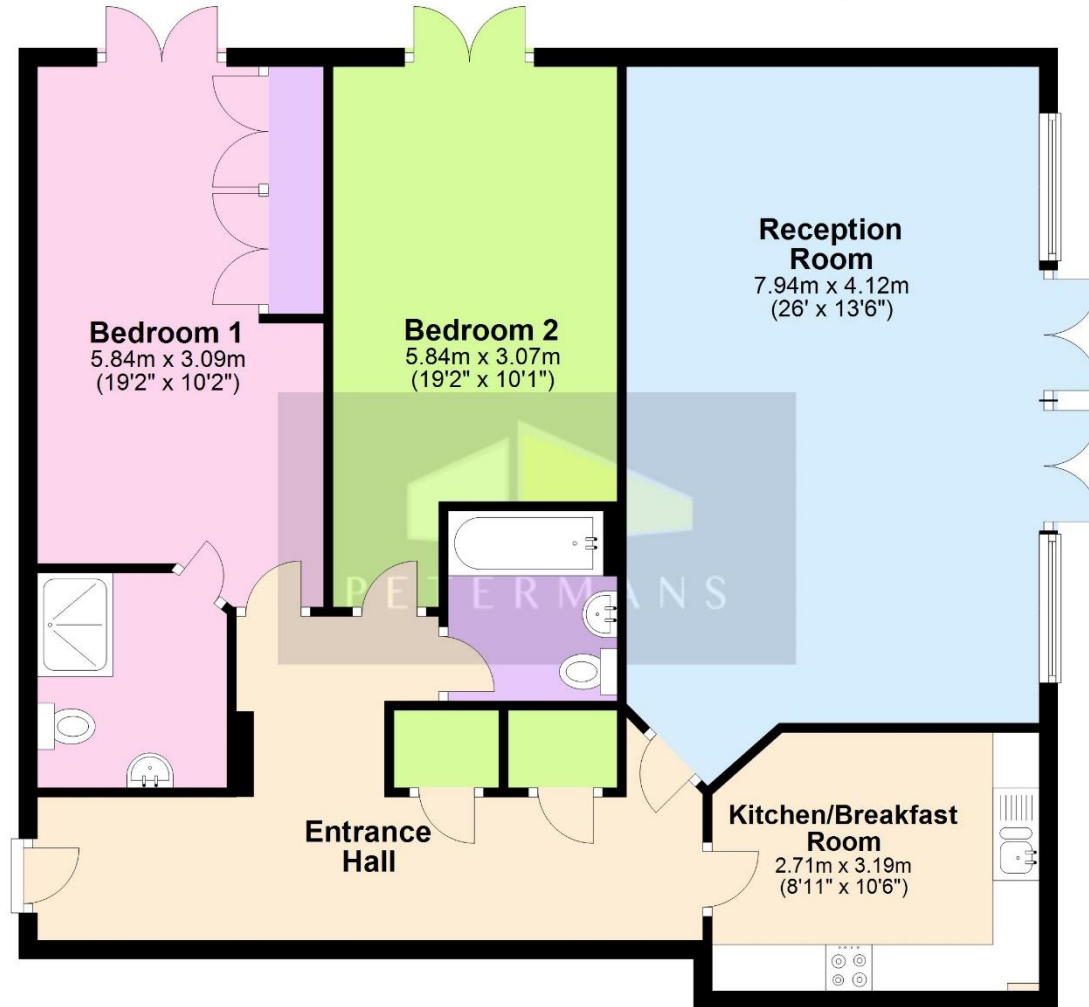
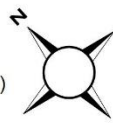


The property comprises a spacious and bright reception room with access to private terrace, fitted kitchen with integrated appliances, master bedroom with en-suite shower room, spacious second bedroom and separate shower room. There is also allocated parking for two cars in the underground car park.



# Sixth Floor

Approx. 104.1 sq. metres (1120.1 sq. feet)



Total area: approx. 104.1 sq. metres (1120.1 sq. feet)

**VIEWING STRICTLY BY APPOINTMENT ONLY.**

**PETERMANS TEL: 020 8958 5040** Please Note That The Gas And Electric Appliances Have Not Been Tested To Ensure That They Are In Working Order. All Measurements Are Taken With A Laser Tape Measure And Therefore Subject To Some Variation. We Recommend Any Potential Purchaser Checks These For Themselves To Confirm Their Accuracy

Price:	£450,000
Tenure:	Share Of Freehold
Beds:	2
Baths:	2
Reception Rooms:	1
Total Sq Ft:	1,120
Council Tax Band:	Band E in Barnet
EPC Rating:	C
Service Charge:	£6,314 per annum
Lease Length:	105 years

Distance to:  
 Edgware Station: 0.05 Mile  
 Canons Park Station: 1 Mile  
 Mill Hill Station: 1.6 Miles

