



7 Connaught Road

, London, E4 7DL

Offers Over £675,000

Nestled in the heart of North Chingford, this charming three-bedroom mid-terraced Victorian home on Connaught Road offers the perfect blend of character and convenience. Ideally positioned just a short stroll from Chingford Station, the property provides excellent transport links into central London, making it an attractive option for commuters and families alike.

Boasting period features throughout, the home benefits from a spacious layout with a bright and airy feel. The ground floor includes a separate WC for added practicality, while the inviting rear garden offers a peaceful retreat for outdoor entertaining or quiet relaxation.

Nature lovers will appreciate the close proximity to Epping Forest, with its acres of open green space and scenic walking trails just a few minutes' walk away. For those looking to add their own touch, the property also presents fantastic potential to extend, subject to the usual planning permissions (STPP).

A wonderful opportunity to secure a characterful Victorian home in a highly sought-after location, offering both lifestyle and potential in equal measure.

- Charming Mid-Terraced Victorian Home
- Three Bedrooms
- Bright Living/Dining Area
- Spacious Fitted Kitchen
- Ground Floor WC
- Modern Family Bathroom
- Private Rear Garden
- Excellent Transport Links
- Located Ideally For Epping Forest Green Spaces

Viewing

Please contact our Chingford Office on 0208 529 8700 if you wish to arrange a viewing appointment for this property or require further information.



3



1

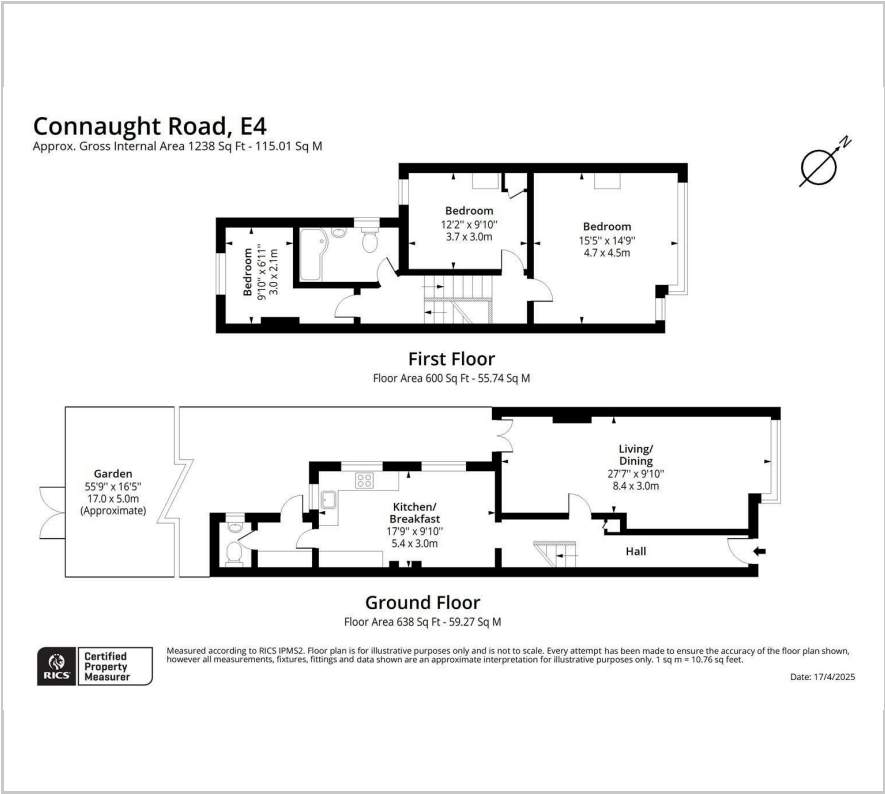


1



D

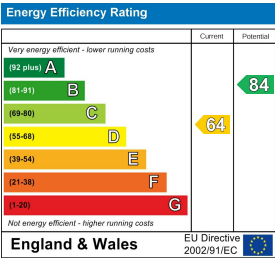
Floor Plan



Area Map



Energy Efficiency Graph



These particulars, whilst believed to be accurate are set out as a general outline only for guidance and do not constitute any part of an offer or contract. Intending purchasers should not rely on them as statements of representation of fact, but must satisfy themselves by inspection or otherwise as to their accuracy. No person in this firms employment has the authority to make or give any representation or warranty in respect of the property.