

An independent production by
KENSINGTON'S FINEST SALES & LETTINGS AGENCY



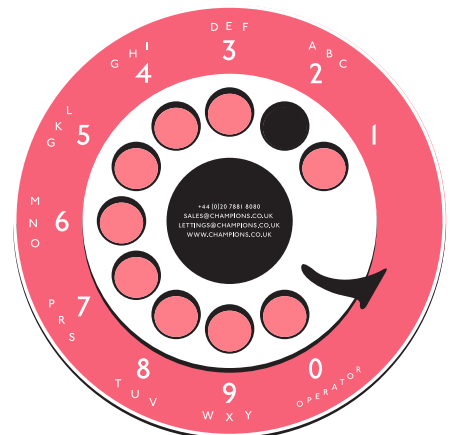
A London Premiere
NOW SHOWING



NOW SHOWING

CROMWELL ROAD
GLOUCESTER ROAD, SW7
£1,295,000 LEASEHOLD

●
CONTACT US
020 7881 8080
sales@champions.co.uk



Dial
C for
Champions

ON LOCATION IN

CROMWELL ROAD

PRESENTING

A 3 BED APARTMENT

SYNOPSIS

A spacious three bedroom penthouse with great views of London, on the eleventh floor (with lift) of this portered apartment building; further benefitting from secure underground parking including two spaces, balcony, use of a sky lobby with 24 hour

FULL CAST

PROPERTY TYPE
APARTMENT

BEDROOMS
3

BATHROOMS
2

NEAREST TUBE
GLOUCESTER ROAD

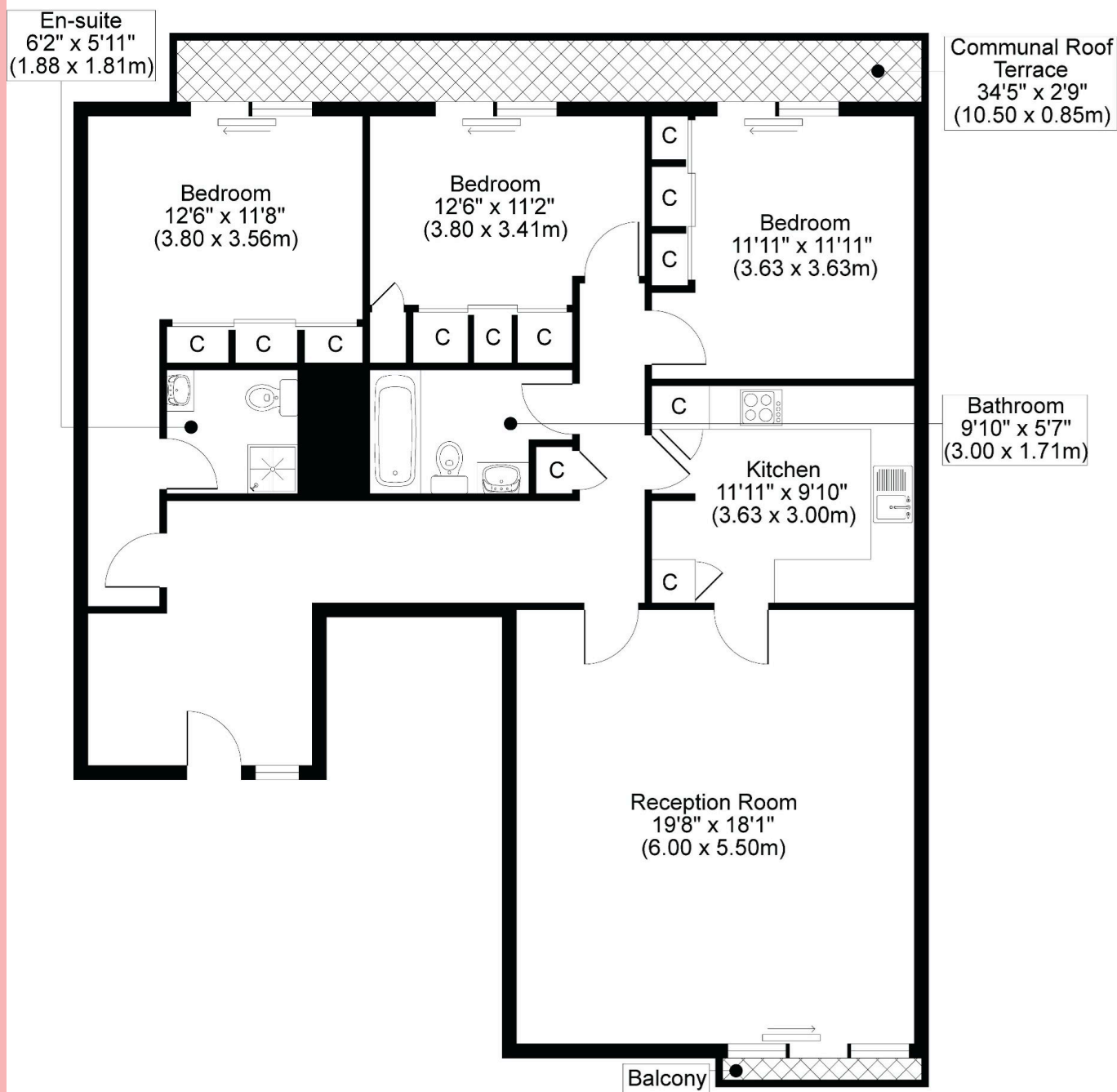
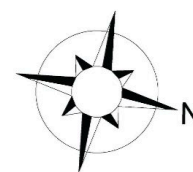
SERVICE CHARGE
£163;16,865.88 p.a &
£163;1,818.24 p.a for the 2 parking spaces

ENERGY RATING
C

Go to our website to view the Energy Efficiency Rating and Environmental Impact Rating chart for this property.



POINT WEST, CROMWELL ROAD, SW7
TOTAL APPROX FLOOR PLAN AREA 1264 SQ.FT (117 SQ.M)
ELEVENTH FLOOR



CHAMPIONS, FOR THEMSELVES AND THE VENDORS OR LESSORS OF THIS PROPERTY, WHOSE AGENTS THEY ARE GIVE NOTICE THAT:

i) These particulars set out a general outline only for the guidance of intended purchasers or lessees and do not constitute, nor constitute any part of, an offer or contract.

ii) Measurements are given to the following accuracy: rooms are measured to the nearest 90mm and the maximum appropriate measurements are normally given. Rooms of irregular size will be identified in the description or floor plans.

iii) Any mechanical or electrical device has not been tested and cannot be guaranteed. Similarly services have not been tested and cannot be guaranteed.

iv) Some of the photographs taken for this brochure have been taken with a camera using a wide angle lens and are believed to be a fair representation of the property at the time of going to the market. Neither the vendor, Champions nor any person in the employment of Champions has any authority to make or give any representation or warranty whatsoever in relation to this property.