

An independent production by  
KENSINGTON'S FINEST SALES & LETTINGS AGENCY



A London Premiere

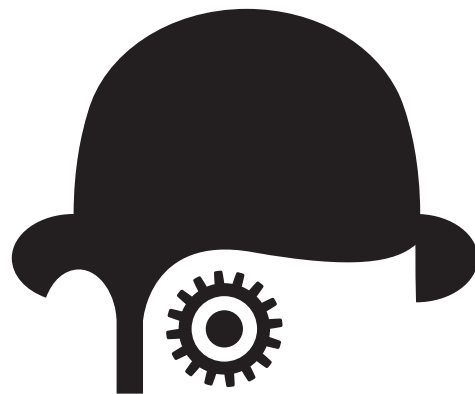
NOW SHOWING



NOW SHOWING

ENNISMORE MEWS  
KNIGHTSBRIDGE, SW7  
£2500 PER WEEK

●  
CONTACT US  
020 7881 8080  
lettings@champions.co.uk



CLOCKWORK PINK

---

ON LOCATION IN

# ENNISMORE MEWS

PRESENTING

## A FOUR BEDROOM MEW HOUSE

---

### SYNOPSIS

A bright and spacious mews house set out over four floors a quiet residential cobbled mews off Ennismore Gardens and within minutes walk from the Brompton Road, South Kensington Underground Station and Hyde Park. The property benefits from three reception rooms, four good size bedrooms, a study, utility room, three bathrooms and a guest WC on the first floor, there is air conditioning and a East facing roof terrace off the master bedroom.

---

### FULL CAST

ROAD NAME  
ENNISMORE MEWS

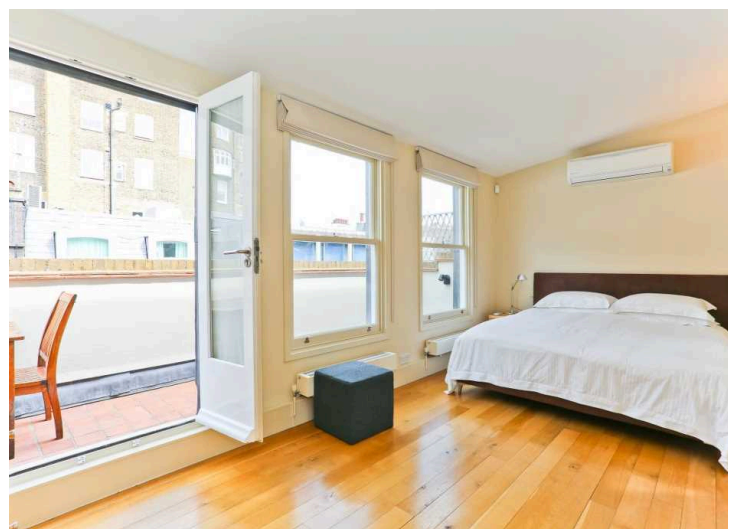
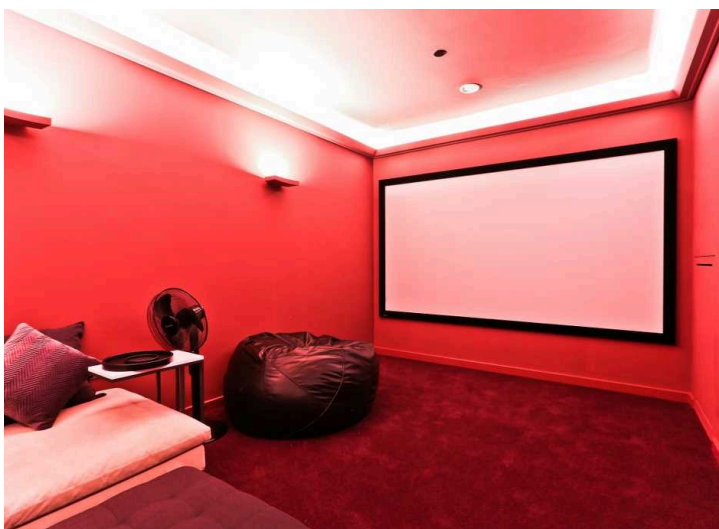
PROPERTY TYPE  
MEWS

BEDROOMS  
4

BATHROOMS  
3

ENERGY RATING  
C

Go to our website to view the Energy Efficiency Rating and Environmental Impact Rating chart for this property.





### TENANCY FEES

Tenants will be liable to pay the following fees to Champions unless otherwise agreed in writing:

**TENANCY CONTRACT FEE**  
£250 + VAT

**REFERENCING FEE**  
£35 + VAT OR £35 + VAT  
INDIVIDUAL COMPANY

**RENEWAL  
ADMINISTRATION FEE**  
£150 + VAT

This is only chargeable if you renew or extend your tenancy beyond the end of the initial term. As well as the above, tenants are expected to provide a deposit of six weeks' rent prior to the start of their tenancy and pay for the cost of cleaning and inventory check-out at the end of their tenancy.



Ennismore Mews, SW7  
Approximate Gross Internal Area = 2194 sq ft / 203.87 sq m

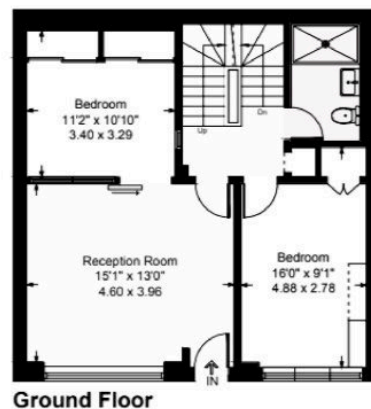
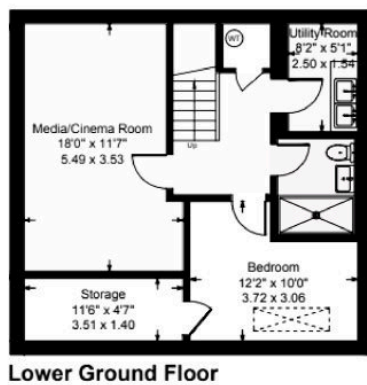
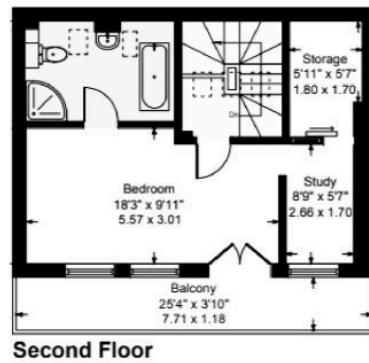
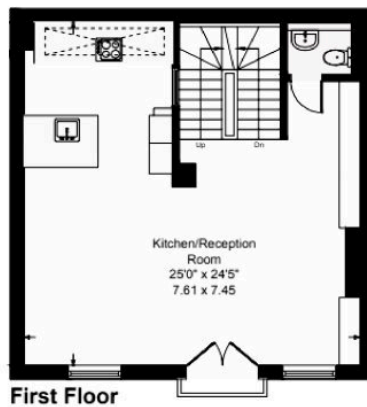


Illustration for identification purposes only.  
measurements are approximate, not to scale. (0234)

CHAMPIONS, FOR THEMSELVES AND THE VENDORS OR LESSORS OF THIS PROPERTY, WHOSE AGENTS THEY ARE GIVE NOTICE THAT:

i) These particulars set out a general outline only for the guidance of intended purchasers or lessees and do not constitute, nor constitute any part of, an offer or contract.

ii) Measurements are given to the following accuracy; rooms are measured to the nearest 90mm and the maximum appropriate measurements are normally given. Rooms of irregular size will be identified in the description or floor plans.

iii) Any mechanical or electrical device has not been tested and cannot be guaranteed. Similarly services have not been tested and cannot be guaranteed.

iv) Some of the photographs taken for this brochure have been taken with a camera using a wide angle lens and are believed to be a fair representation of the property at the time of going to the market. Neither the vendor, Champions nor any person in the employment of Champions has any authority to make or give any representation or warranty whatsoever in relation to this property.