

An independent production by
KENSINGTON'S FINEST SALES & LETTINGS AGENCY



A London Premiere

NOW SHOWING

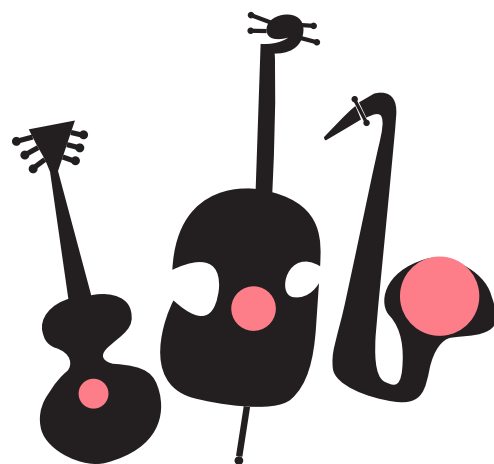


NOW SHOWING

CHEESEMANS TERRACE
WEST KENSINGTON, W14
£495 PER WEEK

CONTACT US

020 7881 8080
lettings@champions.co.uk



Some like ^{it} DOT

ON LOCATION IN

CHEESEMANS TERRACE

PRESENTING

A THREE BEDROOM APARTMENT

SYNOPSIS

A three bedroom first floor apartment which is entered from the second floor. This purpose built property benefits from a 15' reception room, separate kitchen, three bedrooms and bathroom. The property is just off the North End Road, moments from the West Kensington tube station and all local amenities. Heating and hot water are included.

FULL CAST

ROAD NAME
CHEESEMANS TERRACE

PROPERTY TYPE
APARTMENT

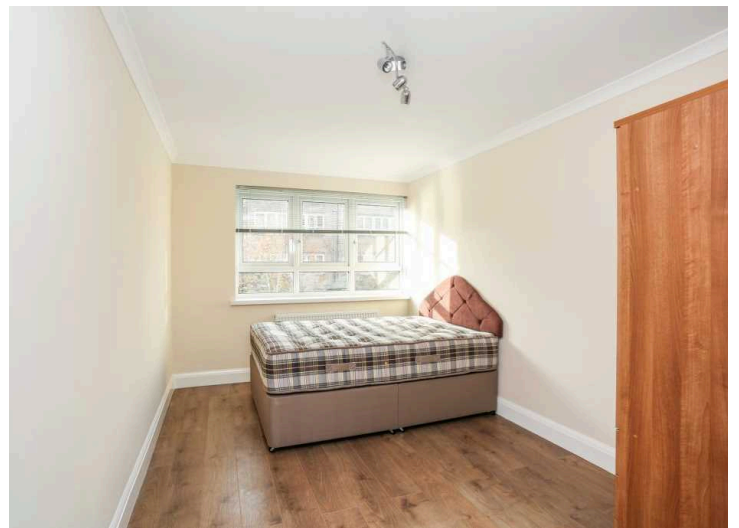
BEDROOMS
3

BATHROOMS
1

NEAREST TUBE
WEST KENSINGTON

ENERGY RATING
C

Go to our website to view the Energy Efficiency Rating and Environmental Impact Rating chart for this property.



TENANCY FEES

Tenants will be liable to pay the following fees to Champions unless otherwise agreed in writing:

TENANCY CONTRACT FEE
£250 + VAT

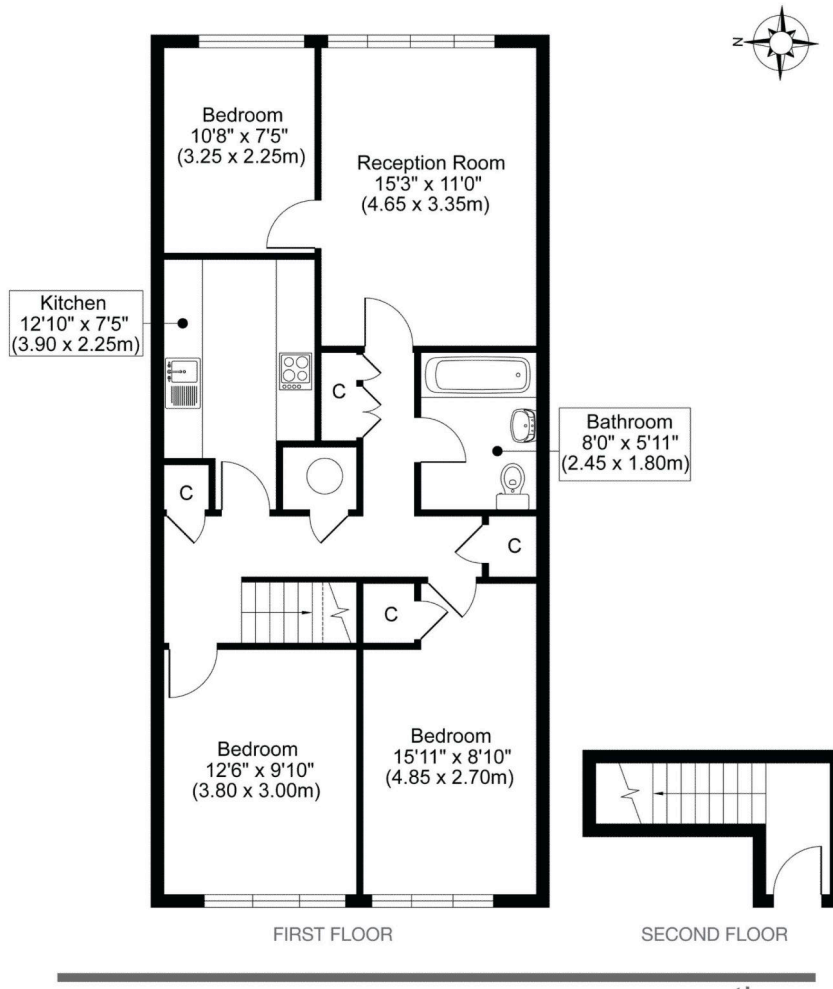
REFERENCING FEE
£35 + VAT OR £35 + VAT
INDIVIDUAL COMPANY

**RENEWAL
ADMINISTRATION FEE**
£150 + VAT

This is only chargeable if you renew or extend your tenancy beyond the end of the initial term. As well as the above, tenants are expected to provide a deposit of six weeks' rent prior to the start of their tenancy and pay for the cost of cleaning and inventory check-out at the end of their tenancy.



CHEESEMANS TERRACE, W14
TOTAL APPROX FLOOR PLAN AREA 873 SQ.FT (81 SQ.M)



CHAMPIONS, FOR THEMSELVES AND THE VENDORS OR LESSORS OF THIS PROPERTY, WHOSE AGENTS THEY ARE GIVE NOTICE THAT:

i) These particulars set out a general outline only for the guidance of intended purchasers or lessees and do not constitute, nor constitute any part of, an offer or contract.

ii) Measurements are given to the following accuracy: rooms are measured to the nearest 90mm and the maximum appropriate measurements are normally given. Rooms of irregular size will be identified in the description or floor plans.

iii) Any mechanical or electrical device has not been tested and cannot be guaranteed. Similarly services have not been tested and cannot be guaranteed.

iv) Some of the photographs taken for this brochure have been taken with a camera using a wide angle lens and are believed to be a fair representation of the property at the time of going to the market. Neither the vendor, Champions nor any person in the employment of Champions has any authority to make or give any representation or warranty whatsoever in relation to this property.