

An independent production by  
KENSINGTON'S FINEST SALES & LETTINGS AGENCY



A London Premiere  
NOW SHOWING



NOW SHOWING

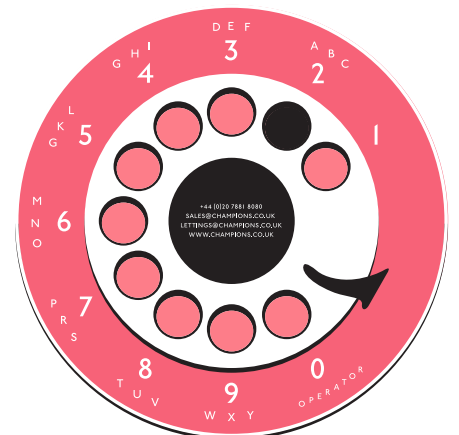
# CROMWELL GROVE SHEPHERDS BUSH, W6

£575,000 SHARE OF FREEHOLD

CONTACT US

020 7881 8080

sales@champions.co.uk



Dial  
for  
Champions

---

ON LOCATION IN

# CROMWELL GROVE

PRESENTING

## A ONE BEDROOM APARTMENT

---

### SYNOPSIS

This apartment will appeal to a buyer who is happy to do some updating in order to add value.

Being situated on the top two floors (entrance on 1st floor) it has a vaulted ceiling with a properly usable galleried area suitable for a number of purposes.

Measuring well over 1000sqft it also benefits from plenty of storage space and importantly a roof terrace. The flat is in an end-of-terrace Victorian house in the popular Melrose Conservation Area. Cromwell Grove is a 5-10 minute walk from Shepherds Bush.

---

### FULL CAST

PROPERTY TYPE  
MAISONETTE

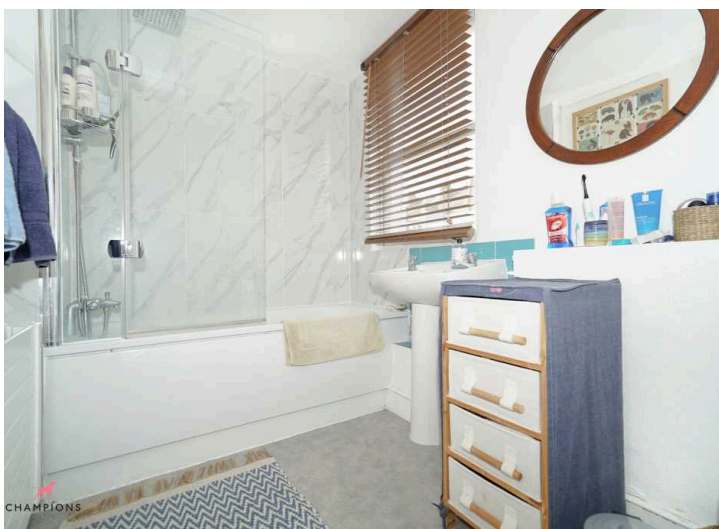
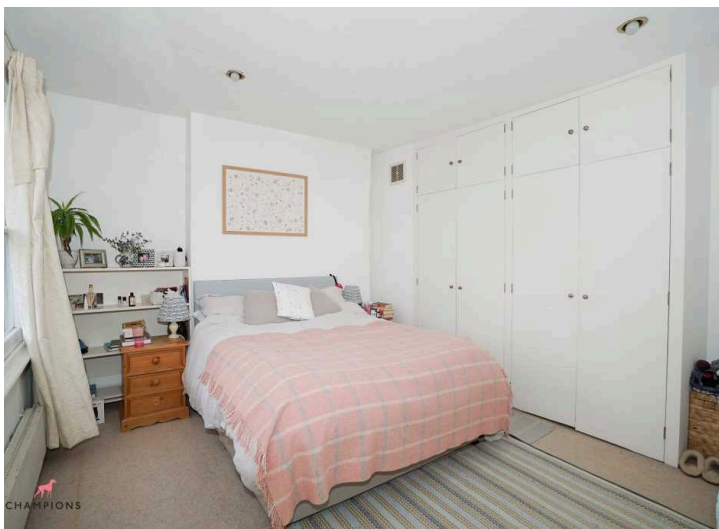
BEDROOMS  
1

BATHROOMS  
1

SERVICE CHARGE  
0

ENERGY RATING  
E

Go to our website to view the Energy Efficiency Rating and Environmental Impact Rating chart for this property.





32 CROMWELL GROVE  
 TOTAL APPROX INTERNAL AREA 1066 SQ.FT (99.03 SQ.M)  
 TOP FLOOR



CHAMPIONS, FOR THEMSELVES AND THE VENDORS OR LESSORS OF THIS PROPERTY, WHOSE AGENTS THEY ARE GIVE NOTICE THAT:

i) These particulars set out a general outline only for the guidance of intended purchasers or lessees and do not constitute, nor constitute any part of, an offer or contract.

ii) Measurements are given to the following accuracy: rooms are measured to the nearest 90mm and the maximum appropriate measurements are normally given. Rooms of irregular size will be identified in the description or floor plans.

iii) Any mechanical or electrical device has not been tested and cannot be guaranteed. Similarly services have not been tested and cannot be guaranteed.

iv) Some of the photographs taken for this brochure have been taken with a camera using a wide angle lens and are believed to be a fair representation of the property at the time of going to the market. Neither the vendor, Champions nor any person in the employment of Champions has any authority to make or give any representation or warranty whatsoever in relation to this property.