



ROUNDHILLS, WALTHAM ABBEY, ESSEX

roffeys.net

Property Professionals *Since 1988*



For an appointment to view call 01992 788088
or email enquiries@roffeys.net

Introduction

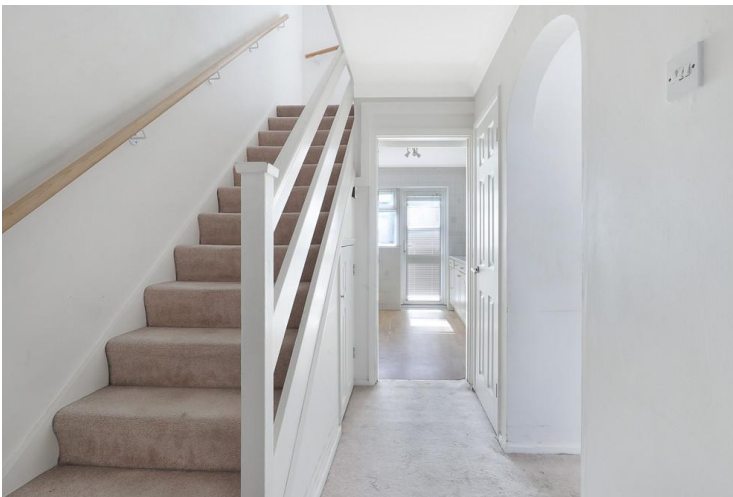
Available as a chain-free sale, this three-bedroomed terraced house requires internal refurbishment.

The accommodation includes lounge / diner, kitchen with serving hatch, shower / wet room, and ground floor wc.

The rear garden is south facing, and a good-sized front garden has driveway to garage.

Summary

- Internal refurbishment required.
- Three bedrooms (two doubles)
- Shower / wet room.
- Lounge / diner
- Kitchen with serving hatch
- Ground floor wc
- South facing garden
- Garage and parking
- Chain-free sale
- Exclusive to ROFFEYS



GROUND FLOOR

ENTRANCE LOBBY

8' 0" x 5' 10" (2.44m x 1.78m)

HALLWAY

14' 7" x 3' 0" (4.44m x 0.91m)

KITCHEN

10' 0" x 8' 5" (3.05m x 2.57m)

LOUNGE / DINER

25' 0" x 11' 6" max. (7.62m x 3.51m) reducing to 8'11"
(2.44m)

FIRST FLOOR - LANDING

8' 8" x 5' 10" (2.64m x 1.78m)

BEDROOM ONE

13' 6" x 9' 8" (4.11m x 2.95m)

BEDROOM TWO

11' 2" x 10' 7" (3.4m x 3.23m)

BEDROOM THREE

10' 0" x 7' 11" (3.05m x 2.41m)

SHOWER WETROOM

6' 9" x 5' 5" (2.06m x 1.65m)

EXTERIOR

REAR GARDEN

50' 0" x 19' 0" (15.24m x 5.79m) approx.

FRONT GARDEN

45' 0" x 19' 0" approx. (13.72m x 5.79m)

GARAGE

15' 10" x 8' 2" (4.83m x 2.49m)

ADDITIONAL INFORMATION:-

Tenure: Freehold

Council Tax Band : D

Borough - Epping Forest

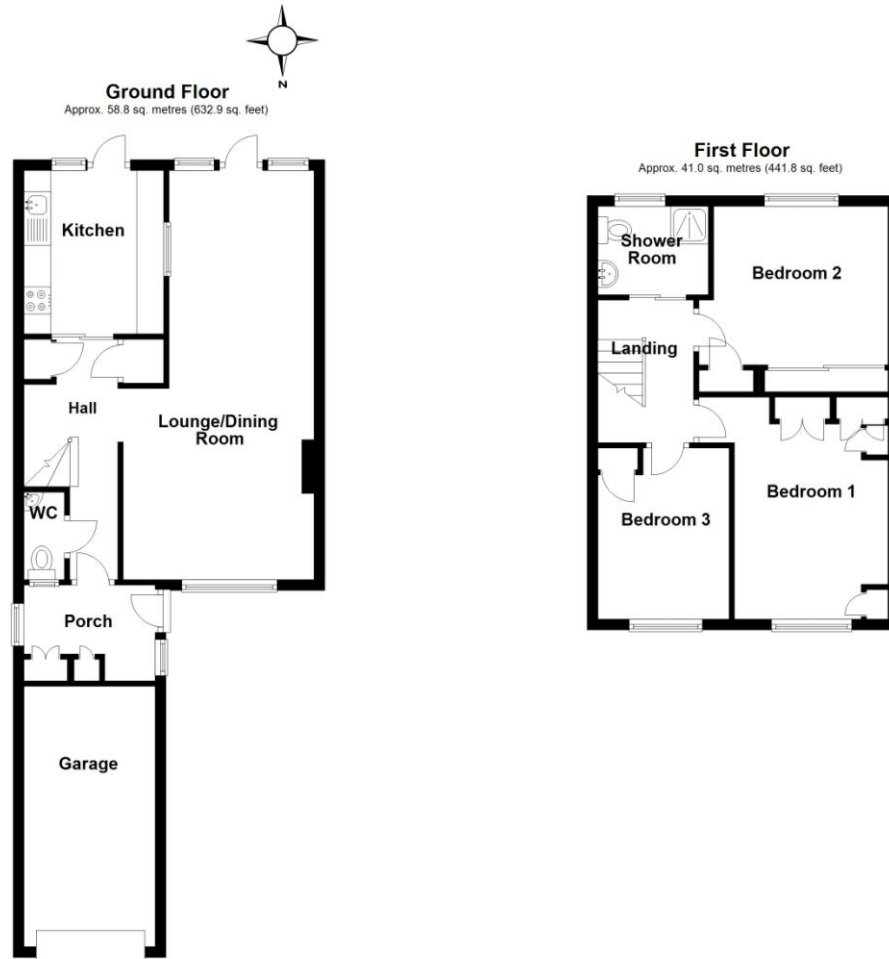
Energy Efficiency Rating: TBA

Internal Area: 948 sq.ft (88sq.m.) approx.

Plot Area: 0.05 acres (88 sq.m.) approx.



Floor plans are not to scale and are for illustrative purposes only. Approximate gross internal area = 88 sq m (948 sq ft)



Total area: approx. 99.8 sq. metres (1074.7 sq. feet)

YOU MAY BE ASSURED

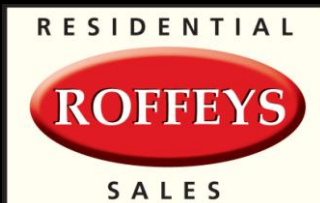


IMPORTANT NOTICE

Peter Roffey Estate Agents limited trading as Roffeys for themselves and for the sellers, or lessees of properties for whom they act, give notice that: These particulars are intended as a general outline only as guidance for prospective purchasers, lessees or tenants, and do not constitute the whole or any part of an offer or contract. Peter Roffey Estate Agents limited, trading as Roffeys, cannot guarantee the accuracy of any descriptions, dimensions, floor plans, distances, references to condition and other details contained herein. All details in these particulars are provided in good faith and believed to be correct however any prospective purchasers should not rely on them as statements or representations of fact but satisfy themselves by inspection or otherwise as to their accuracy prior to entering into any contractual obligation. No person in the employment of Peter Roffey Estate Agents Limited has any authority to make or give any representation or warranty or enter into any contract whatsoever in relation to this property. Peter Roffey Estate Agents Limited will not be liable, in negligence or otherwise, for any loss arising from the use of, or reliance upon, these particulars. All negotiations prior to exchange of formal contracts shall be deemed to be Subject to Contract.

NOTES FOR INTERESTED PARTIES

No warranties are given in respect of the lawful planning use of the property and interested parties should satisfy themselves by making their enquiries with the local planning authority or otherwise, prior to entering into any contractual obligation. No services (including drains), apparatus, equipment, fixtures and fittings have been tested nor are they guaranteed and interested parties should carry out their own testing prior to entering into any contractual obligation. Any photographs are for identification purposes only and may include part of a neighbouring property which is not offered in this transaction, where for example it has not been possible to obtain a clear view of the property.



ROFFEYS RESIDENTIAL
37 Highbridge Street • Waltham Abbey • Essex • EN9 1BD
T: 01992 788088 E: enquiries@roffeys.net www.roffeys.net
SALES | LETTINGS | PROPERTY MANAGEMENT

