

STEPPING STONES

3-4 Horsefair • Banbury • Oxfordshire • OX16 0AA
Telephone: 01295 275909 • **Email:** info@steppingstonesletting.com



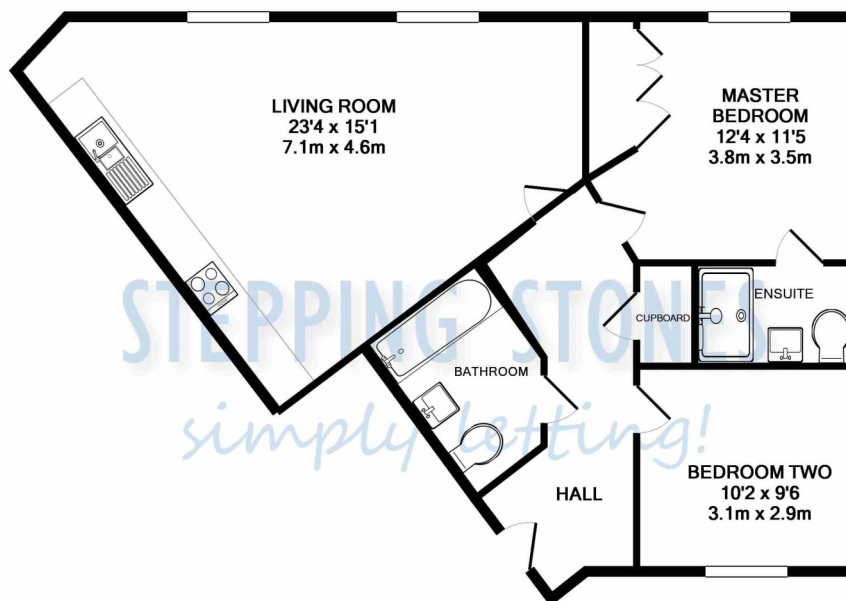
JUNIPER HOUSE, CLARKES COURT, BANBURY, OXON, OX16 2BP

£1,050pcm



A spacious and well presented two bedroom first floor apartment situated in a popular location, convenient for the town centre. The property benefits from having gas central heating, allocated car parking and en-suite to the master bedroom. EPC Rating: B. **Available: 1st August.**

- 2 Bedrooms
- High specification
- Communal garden
- 2 Bathrooms
- Gas central heating
- Allocated car parking



TOTAL APPROX. FLOOR AREA 716 SQ.FT. (66.5 SQ.M.)

Score	Energy rating	Current	Potential
92+	A		
81-91	B	81 B	81 B
69-80	C		
55-68	D		
39-54	E		
21-38	F		
1-20	G		

RENT: £ 1,050.00

TOTAL DEPOSIT: £ 1,211.53

HOLDING DEPOSIT: £ 242.31

Holding deposit is payable when the application is made and is deducted from the initial rent if the application is successful.

Please Note: This is **non-refundable** should any relevant person (including any guarantor(s)) withdraw from the tenancy, fail a Right-to-Rent check, provide materially significant false or misleading information, or fail to sign their tenancy agreement (and / or Deed of Guarantee) within 15 calendar days (or other Deadline for Agreement as mutually agreed in writing).

BEDROOM ONE: 12'4 x 11'5 Window to front aspect. Built in double hanging wardrobe.

EN SUITE: Window to side aspect. Comprising modern classic suite of shower cubicle, wash hand basin and low level w.c.

BEDROOM TWO: 10'2 x 9'6 Window to rear aspect.

BATHROOM: Comprising classic modern suite of bath wash hand basin and low level w.c.

LOUNGE/DINER/KITCHEN: 23'4 x 15'1 Two windows to front aspect. Open plan kitchen which comprises modern light wood floor and wall mounted units. Four ring gas hob with oven below.

PARKING: Allocated permitted car parking for one vehicle

HEATING: Gas central heating

COUNCIL TAX: Band B

REFERENCE: 121

WATER & DRAINAGE: Mains connected

To check broadband and phone coverage please visit the Ofcom website: <https://www.ofcom.org.uk/phones-and-broadband/coverage-and-speeds/ofcom-checker/>

Important Notice Every care has been taken with the preparation of these particulars but they are for general guidance only and complete accuracy cannot be guaranteed. If there is any point which is of particular importance then professional verification should be sought. These particulars do not constitute part, or all of, an offer or contract and are not to be relied upon as statement of representation or fact. Stepping Stones have not carried out a structural survey and the services, appliances, equipment, fixtures and fittings have not been tested and no guarantees as to their operating ability or efficiency are given. The measurements and floorplans supplied are for general guidance only and are not to scale. All dimensions and compass positions are approximate and for guidance only and should not be relied upon. Photographs are reproduced for general information and it cannot be inferred that any item shown is included in the letting.

