

# STEPPING STONES

3-4 Horsefair • Banbury • Oxfordshire • OX16 0AA  
**Telephone:** 01295 275909 • **Email:** info@steppingstonesletting.com



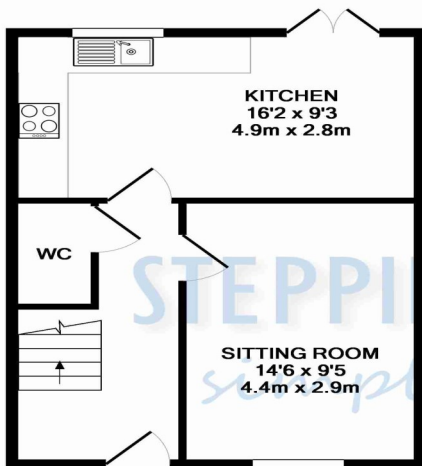
**CANONS ASHBY ROAD, MORETON PINKNEY, NORTHANTS, NN11 3SW £1,250pcm**



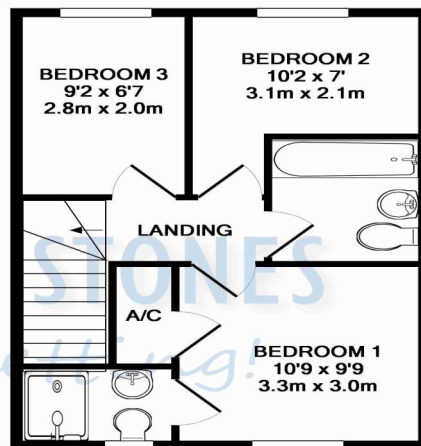
A modern three bedroom mid terrace house situated on a small development in a quiet village location. The property benefits from having an enclosed rear garden, off road car parking and has an en suite to the master bedroom. EPC Rating: C. **Available: 9th July.**

- 3 Bedrooms
- 2 Bathrooms
- Village location
- Pets considered
- Off road car parking
- Enclosed rear garden





GROUND FLOOR  
APPROX. FLOOR  
AREA 384 SQ.FT.  
(35.7 SQ.M.)



1ST FLOOR  
APPROX. FLOOR  
AREA 385 SQ.FT.  
(35.8 SQ.M.)

TOTAL APPROX. FLOOR AREA 769 SQ.FT. (71.5 SQ.M.)

Whilst every attempt has been made to ensure the accuracy of the floor plan contained here, measurements of doors, windows, rooms and any other items are approximate and no responsibility is taken for any error, omission, or mis-statement. This plan is for illustrative purposes only and should be used as such by any prospective purchaser. The services, systems and appliances shown have not been tested and no guarantee as to their operability or efficiency can be given  
Made with Metropix ©2015

Score	Energy rating	Current	Potential
92+	A		
81-91	B		88   B
69-80	C	72   C	
55-68	D		
39-54	E		
21-38	F		
1-20	G		

RENT: £ 1,250.00

TOTAL DEPOSIT: £ 1,442.30

HOLDING DEPOSIT: £ 288.46

Holding deposit is payable when the application is made and is deducted from the initial rent if the application is successful.

**Please Note:** This is **non-refundable** should any relevant person (including any guarantor(s)) withdraw from the tenancy, fail a Right-to-Rent check, provide materially significant false or misleading information, or fail to sign their tenancy agreement (and / or Deed of Guarantee) within 15 calendar days (or other Deadline for Agreement as mutually agreed in writing).

**ENTRANCE HALL:** Door to front aspect.

**LOUNGE:** 14'6 x 9'5 Window to front aspect.

**KITCHEN/DINER:** 16'2 x 9'3 Window to rear aspect. French doors to rear garden. Comprising modern floor and wall mounted units. Four ring ceramic hob with electric oven and extractor hood over. Integrated fridge/freezer.

**CLOAKROOM:** Comprising modern suite of low level w/c and wash hand basin.

**BEDROOM ONE:** 10'9 x 9'9 Window to front aspect.

Built in airing cupboard.

**EN SUITE:** Window to front aspect. Modern suite comprising shower cubicle, wash hand basin and low level w/c.

**BEDROOM TWO:** 10'2 x 7'0 Window to rear aspect.

**BEDROOM THREE:** 9'2 x 6'7 Window to rear aspect.

**BATHROOM:** Comprising modern suite of bath, wash hand basin and low level w/c.

**GARDEN:** Enclosed rear garden that has a small patio area and the rest is laid to lawn with gate access.

**HEATING:** Electric heating

**PARKING:** Off road car parking for multiple vehicles

**COUNCIL TAX:** Band B

**EPC RATING:** C

**REFERENCE:** 409

**Important Notice**

Every care has been taken with the preparation of these particulars but they are for general guidance only and complete accuracy cannot be guaranteed. If there is any point which is of particular importance then professional verification should be sought. These particulars do not constitute part, or all of, an offer or contract and are not to be relied upon as statement of representation or fact. Stepping Stones have not carried out a structural survey and the services, appliances, equipment, fixtures and fittings have not been tested and no guarantees as to their operating ability or efficiency are given. The measurements and floorplans supplied are for general guidance only and are not to scale. All dimensions and compass positions are approximate and for guidance only and should not be relied upon. Photographs are reproduced for general information and it cannot be inferred that any item shown is included in the letting.

