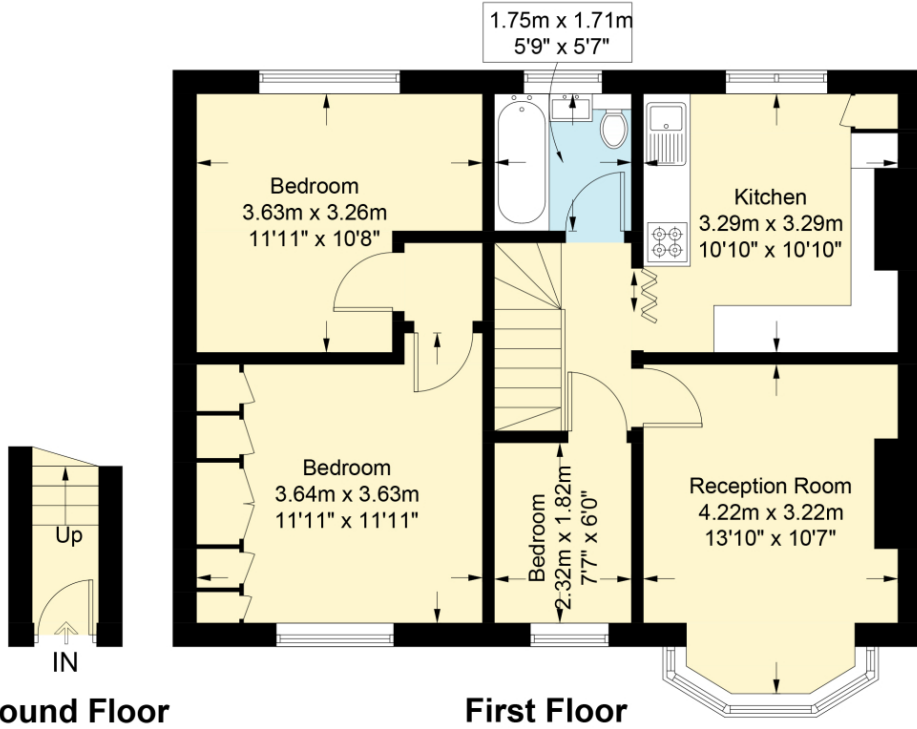
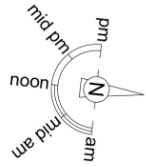




THREE bedroom first-floor apartment situated by the A10 for quick access to the M25. The property offers a blend of comfort and style and approximately 690 sq. ft of internal living space. The property comprises three bedrooms, spacious reception, modern kitchen/diner, and family bathroom. Well located for Enfield Town centre, Enfield Retail Park, and easy access to A10, M25 and Bush Hill Park, & Southbury Road Stations. The property is offered in good order, with high ceilings, wooden flooring throughout, and double-glazed windows. Available Chain Free.

Great Cambridge Road, EN1

Approximate Gross Internal Area = 690 sq ft / 64.1 sq m



Ground Floor

First Floor



This plan is for layout guidance only and is not drawn to scale unless stated. All dimensions, including windows, doors, and the Total Gross Internal Area (GIA), are approximate. For precise measurements, please consult a qualified architect or surveyor before making any decisions based on this plan.

