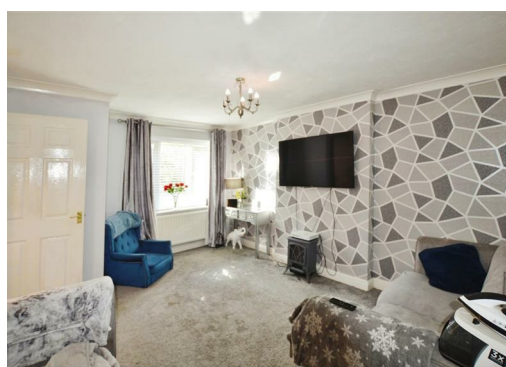




Frank Fold, Heywood, OL10 4FF

£239,995

**** PRICED TO SELL ** VACANT ** DETACHED THREE BEDROOM PROPERTY ** CUL DE SAC LOCATION ** GARDENS WITH HIGH DEGREES OF PRIVACY ** EN SUITE TO MAIN BEDROOM ****



20 Frank Fold, Heywood, OL10 4FF

Situated on an excellent plot, the property offers a front garden with a laid-to-lawn area and a driveway. The rear garden offers a well-tended lawn, a paved patio and mature trees and shrubbery.

The property benefits from a gas central heating system and is further complemented by uPVC double glazing.

This family home is conveniently located near the Springfield Street Play Area, offering an ideal recreational space for children. Its proximity to Bury New Road ensures convenient access to transportation links.

ENTRANCE HALL

Stairs to first floor, door to wc and lounge area

LOUNGE DINING ROOM 14'9" x 12'1" (4.5 x 3.7)

Double glazed window, carpet flooring

CLOAKROOM WC

Low level wc, wash hand basin, double glazed window

KITCHEN DINING ROOM 15'8" x 9'10" (4.8 x 3.0)

Re fitted wall and base units and provides an open plan dining area, door and window to rear gardens

FIRST FLOOR LANDING

Loft access, carpet flooring

MAIN BEDROOM 12'1" x 9'10" (3.7 x 3.0)

Double glazed window, carpet flooring

EN SUITE

BEDROOM 9'2" x 8'2" (2.8 x 2.5)

Double glazed window, carpet flooring

BEDROOM 8'6" x 5'10" (2.6 x 1.8)

Double glazed window, carpet flooring

BATHROOM

Family bathroom with a stylish

three-piece white suite, complemented by grey tiling and an overhead shower.

OUTSIDE

The rear garden offers a well-tended lawn, a paved patio and mature trees and shrubbery.

