

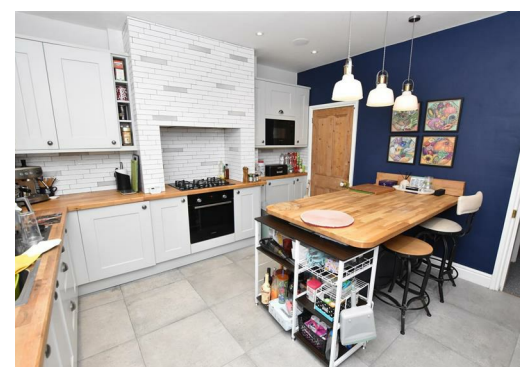


White Lane, Sheffield, S35 2YG

£190,000

A Traditional three bedroom end terrace period cottage which provides a large amount of living space arranged over three floors. The impressive kitchen dining area provides access to the established courtyard gardens whilst to the front there is a comfortable sitting room. The first floor provides two further bedrooms and the main bathroom whilst the large third bedroom is housed in the attic space.

The property is situated in the sought after commuter location of Chapeltown, minutes away from the M1, a short walk to local amenities and the nearby train station, surrounded by reputable schools and with direct roads leading to Sheffield, Barnsley and Rotherham.



15 White Lane, Chapeltown, Sheffield, S35 2YG

LIVING ROOM 12'9" x 12'9" (3.9 x 3.9)

exposed feature fireplace with exquisite tiled hearth, a great focal point to the room, also comprising aerial point, wall mounted radiator and uPVC window to front elevation.

KITCHEN DINING ROOM 12'9" x 12'5" (3.9 x 3.8)

A great family hub or social space, this beautiful kitchen hosts an array of dark blue wall/base units with solid wood work surfaces and matching island/breakfast bar offering ample storage space throughout, complete with integrated gas hob; extractor fan; electric oven; fridge; freezer and washing machine, also comprising inset stainless steel one and a half bowl sink with matching mixer tap, tiled flooring, inset spotlights and speaker system, wall mounted radiator, rear facing uPVC door and uPVC window over looking the courtyard.

CELLAR

wall mounted combi boiler, storage

LANDING

Access to all rooms

BEDROOM 12'9" x 12'9" (3.9 x 3.9)

A large double bedroom boasting a built in storage cupboard, wall mounted radiator and front facing uPVC window.

BEDROOM 10'2" x 6'10" (3.1 x 2.1)

Single bedroom, nursery or home office, comprising wall mounted radiator and rear facing uPVC window.

BATHROOM

Matching suite with bath with telephone tap and shower over, low flush WC, white pedestal sink, wall mounted radiator, built in storage cupboards, laminate flooring and frosted uPVC window.

ATTIC BEDROOM 13'5" x 12'5" (4.1 x 3.8)

Providing two walls of fitted storage and racks in the eaves, wall mounted radiator, wall lights and large skylight.

GARDENS

To the rear of the property is a low maintenance courtyard, with pagodas, two separate seating areas; one under cover, established climbing plants up trellises and well stocked flower beds throughout, all complete with outdoor tap and sockets.

GARDENS

