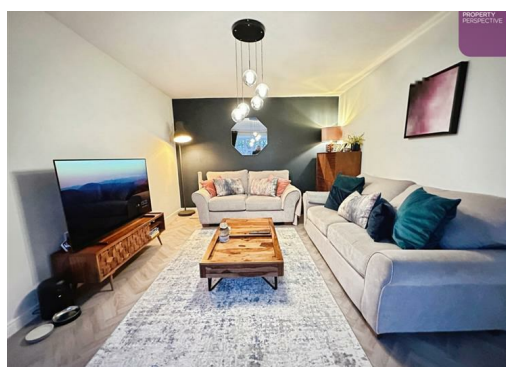
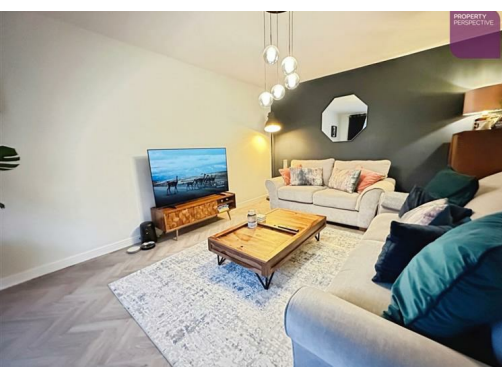




Atkinson Drive, Macclesfield, SK10 3FZ

£410,000

STUNNING SEMI-DETACHED HOME!!! We are delighted to be able to present to you this beautifully presented and maintained 3 bedroom semi-detached house, situated on the outskirts of Macclesfield!



11 Atkinson Drive, Macclesfield, SK10 3FZ

Property Perspective are delighted to be able to present to you this beautifully presented and maintained 3 bedroom semi-detached house, situated on the outskirts of Macclesfield. Benefiting from spacious living accommodation set over 2 floors, private landscaped rear garden and modern sophisticated decor throughout.

The living accommodation briefly comprises of; lounge, open plan kitchen/diner, WC/cloaks and hallway. To the first floor 3 double bedrooms, en-suite shower room and modern bathroom.

The property is located within a sought-after catchment area for local schooling at both Primary and Secondary levels, with schools boasting a 'GOOD to OUTSTANDING' OFSTED ratings. The area is also ideally located for local amenities/shops and travel links, especially into Macclesfield town centre and Manchester City Centre further afield.

FREEHOLD

Council tax band - D

GROUND FLOOR

Lounge 16'1" x 10'11" (4.90m x 3.33m)

Karndean flooring with bay fronted window, curtains and blind

Kitchen/dinner 18'2" x 10'11" (5.54m x 3.34m)

Karndean flooring with patio doors leading to the rear garden and blind. A range of fitted kitchen units, worktops and integrated kitchen appliances, including oven, hob, hood, dishwasher and fridge-freezer

WC/cloaks

Karndean flooring with 2 piece bathroom suite in white and radiator

FIRST FLOOR

Bedroom 12'0" x 11'2" (3.67m x 3.41m)

Carpet flooring with window to the front elevation, fitted wardrobes and curtains

En-suite

High quality vinyl flooring with 2 piece bathroom suite in white, separate showering enclosure, partially tiled decor and radiator

Bedroom 11'7" x 9'2" (3.53m x 2.79m)

Carpet flooring with window to the rear elevation, curtains and blind

Bedroom 11'1" x 8'8" (3.39m x 2.65m)

Carpet flooring with window to the rear elevation, curtains and blind

Bathroom

High quality vinyl flooring with 3 piece bathroom suite in white, shower over bath with glass splash-back screen and radiator

EXTERNAL

Beautifully presented and landscaped rear garden, enclosed by panel fencing with elevated decking area, laid to lawn and patio. Deceptively large driveway to the front, capable of accommodating 2 vehicles, with private aspect to the front, looking over communal green area.



