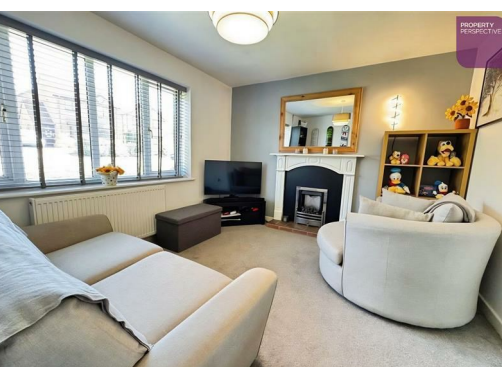




Hemsby Way, Newcastle, ST5 4QX

£197,000

**** VIEWING BY APPOINTMENT ONLY **** Well presented 3 bedroom semi detached house situated in an established residential location. The property offers modern fittings throughout inclusive of the modern kitchen with patio doors to the rear. Ready to move in with blinds and flooring included. Well presented gardens with off road parking.



34 Hemsby Way, Newcastle, ST5 4QX

We are delighted to offer for sale this well presented semi detached house located in an established residential location with access to amenities and transport links plus within catchment of OFSTED 'Good' Primary and Secondary schools.

The property benefits from gas central heating and PVCu double glazing. Items of note include the patio doors to rear and well presented gardens. There are ample sockets and media points. The property is ready to move in with flooring included.

To the ground floor is an entrance hall, lounge and dining kitchen. There are 3 bedrooms plus a family bathroom off the first floor landing.

There are well presented and upgraded gardens. There is off road parking to the side.

Tenure - Freehold
Council Tax - Band B

The property comprises.

Ground Floor

Hallway

With fitted flooring.

Lounge 14'1" x 11'8" (4.31m x 3.57m)

Featuring a gas fireplace with surround. With fitted flooring.

Dining Kitchen 14'1" x 7'9" (4.30m x 2.37m)

Featuring a comprehensive range of modern wall and base units with complimenting laminate worktops plus tiling. Patio doors to rear. With fitted flooring.

First Floor

Landing

With fitted flooring.

Bedroom 1 11'11" x 8'0" (3.64m x 2.46m)

Featuring built in wardrobes. With fitted flooring.

Bedroom 2 8'6" x 8'0" (2.61m x 2.46m)

With fitted flooring.

Bedroom 3 8'5" x 5'9" (2.59m x 1.77m)

With fitted flooring.

Bathroom 6'2" x 5'4" (1.89m x 1.65m)

Featuring modern white sanitary ware, shower with screen to bath and tiling. With fitted flooring.

External

There are well presented and upgraded gardens. There is off road parking to the side.



