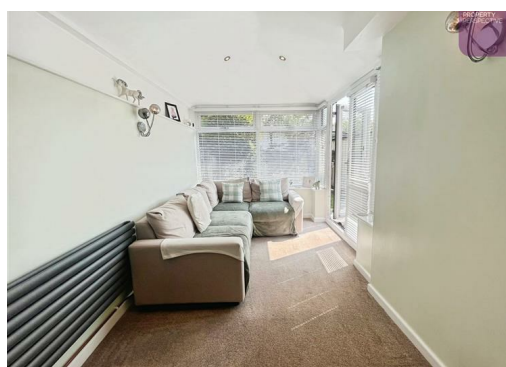




Kildare Road, Bispham, FY2 0LR

£152,495

EXCELLENT VALUE FOR MONEY!!! We are delighted to be able to present to you this beautifully presented and extended 3 bedroom semi-detached house, situated on the outskirts of Bispham!



16 Kildare Road, Bispham, FY2 0LR

GROUND FLOOR

Lounge 15'1" x 9'11" (4.61 x 3.04m)

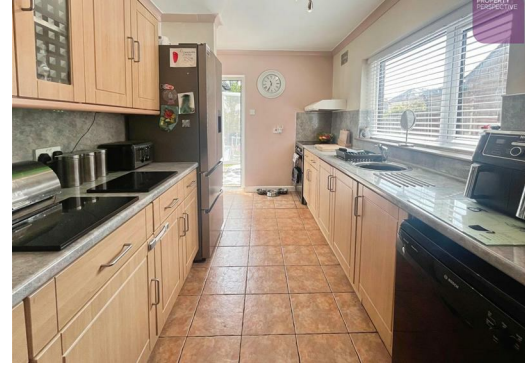
Carpet flooring with French doors leading through to the diner/family room and blind

Dining/family room 22'4" x 7'8" (6.83 x 2.36m)

Carpet flooring with French doors back through to the lounge

Kitchen 13'9" x 7'8" (4.20 x 2.36m)

Tile flooring with access to the rear garden and blind. A range of fitted kitchen units, worktops and space for free-standing kitchen appliances



FIRST FLOOR

Bedroom 12'11" x 8'1" (3.94 x 2.48m)

Carpet flooring with bay fronted window, curtains, blind and fitted wardrobes

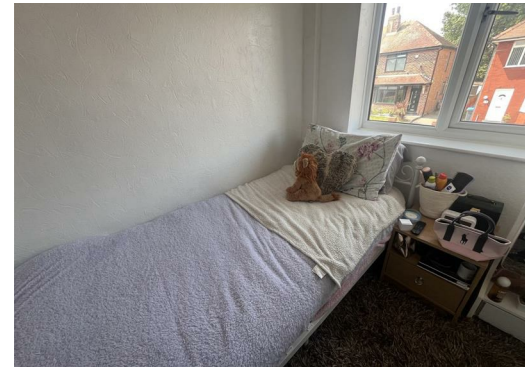


Bedroom 7'7" x 11'3" (2.33 x 3.44m)

Carpet flooring with window to the rear elevation, curtains and fitted wardrobes

Bedroom 6'11" x 5'11" (2.11 x 1.82m)

Carpet flooring with window to the front elevation and blind



Bathroom

Tile flooring with 3 piece bathroom suite in white, shower over bath with glass splash-back screen, spotlighting and heated towel rail

EXTERNAL

Well presented and private rear garden, enclosed by panel fencing with laid to lawn and patio area. Driveway to the front/side of the property, capable of accommodating 2 vehicles leading to a detached single garage.



FREEHOLD

Council tax band - B



