



17 Armstrong Walk, Maltby, Rotherham, S66 8QQ
£190,550

PROPERTY
PERSPECTIVE

GROUND FLOOR

Lounge 15'2" x 13'6" (4.64 x 4.13m)

Carpet flooring with gas fireplace, curtains and blind

Dining area 10'3" x 8'0" (3.13 x 2.44m)

Carpet flooring with patio doors leading to the rear garden, curtains and blind. Open aspect back through to the lounge and kitchen area

Kitchen 10'3" x 5'3" (3.13 x 1.61m)

High quality vinyl flooring with blind. A range of fitted kitchen units, worktops and integrated kitchen appliances, including oven, hob, hood, fridge-freezer and washing machine

FIRST FLOOR

Bedroom 10'8" x 8'0" (3.27 x 2.46m)

Carpet flooring with window to the rear elevation, curtains, blind and fitted wardrobes

Bedroom 12'5" x 7'6" (3.80 x 2.30m)

Carpet flooring with window to the front elevation, curtains and blind

Bedroom 8'0" x 6'11" (2.46 x 2.13m)

Carpet flooring with window to the front elevation and blind

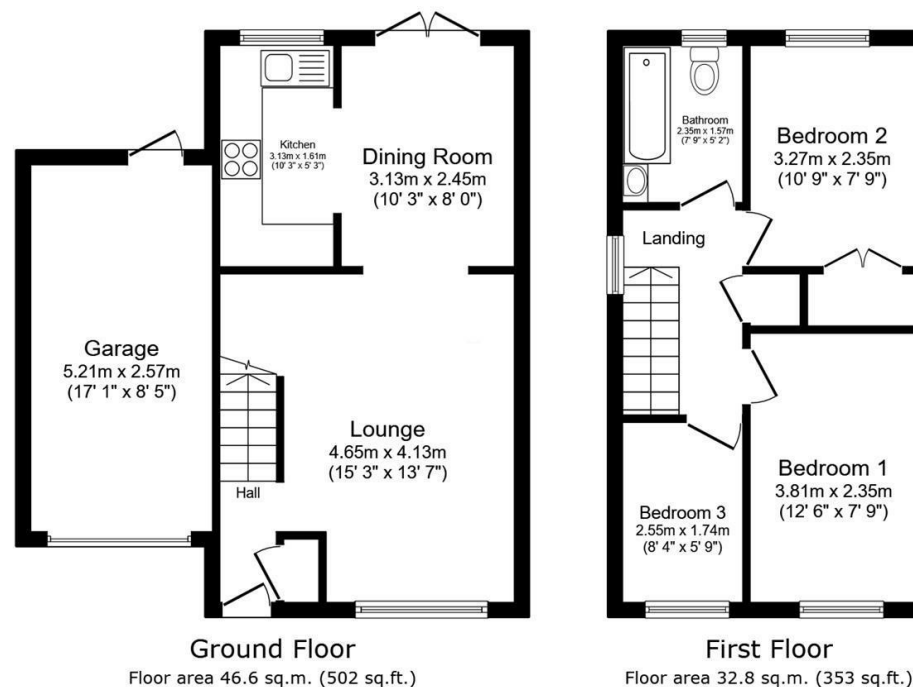
Bathroom

Tile flooring with 3 piece bathroom suite in white, shower over bath with glass splash-back screen, spotlighting, heated towel rail and floor to ceiling tiled decor

EXTERNAL

Private rear garden, enclosed by panel fencing and

boundary wall. Driveway to the front of the property, capable of accommodating 2 vehicles, leading to a single adjoined garage.



Total floor area: 79.4 sq.m. (855 sq.ft.)

This floor plan is for illustrative purposes only. It is not drawn to scale. Any measurements, floor areas (including any total floor area), openings and orientations are approximate. No details are guaranteed, they cannot be relied upon for any purpose and do not form any part of any agreement. No liability is taken for any error, omission or misstatement. A party must rely upon its own inspection(s). Powered by www.Propertybox.io