

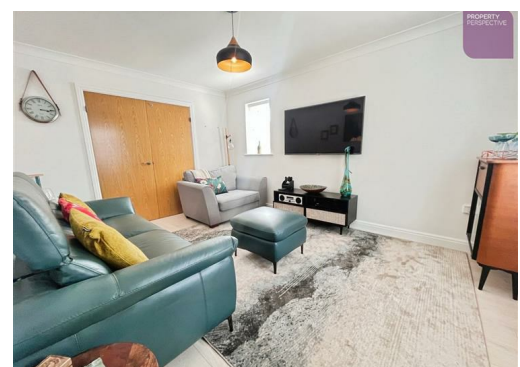


Redwood Boulevard, Blackpool, FY4 5GS

£425,000

STUNNING FAMILY HOME!!! We are delighted to be able to present to you this beautifully presented and maintained 4 bedroom detached house, situated on the popular Redwood Point development!

**FREEHOLD
COUNCIL TAX BAND - E**



17 Redwood Boulevard, Blackpool, FY4 5GS

GROUND FLOOR

Lounge 15'6" x 15'1" (4.72m x 4.60m)

Carpet flooring with patio doors leading to the conservatory, curtains and French doors leading through to the dining room

Dining room 14'5" x 10'9" (4.40 x 3.30m)

High quality wood effect laminate flooring with French doors leading through to the lounge and blind

Study 10'9" x 10'2" (3.30 x 3.10m)

High quality wood effect laminate flooring with blind

Kitchen/Breakfast area 13'9" x 13'4" (4.20 x 4.08m)

Tile flooring with open aspect leading through to the conservatory, spotlighting and breakfast area. A range of fitted high gloss kitchen units, worktops and integrated kitchen appliances, including double oven, hob, hood and dishwasher

Utility 6'7" x 5'4" (2.01 x 1.63m)

Tile flooring with high gloss fitted kitchen units, access to the side of the property and plumbing for washing machine

Orangery 13'9" x 10'6" (4.21 x 3.21m)

High quality wood effect laminate flooring with patio doors leading to the rear garden and blind

WC/cloaks

High quality wood effect laminate flooring with 2 piece bathroom suite in white and radiator

FIRST FLOOR

Bedroom 14'4" x 13'9" (4.38 x 4.20m)

Carpet flooring with window to the rear elevation and blind

En-suite

Tile flooring with 2 piece bathroom

suite in white, separate showering enclosure, heated towel rail, spotlighting and floor to ceiling tiled decor

Bedroom 14'5" x 10'2" (4.41 x 3.10m)

Carpet flooring with window to the rear elevation and blind

En-suite

Tile flooring with 2 piece bathroom suite in white, separate showering enclosure, heated towel rail, spotlighting and partially tiled decor

Bedroom 10'9" x 10'2" (3.30 x 3.10m)

Carpet flooring with window to the front elevation and blind

Bedroom 10'11" x 8'6" (3.35 x 2.60m)

Carpet flooring with window to the front elevation and blind

Bathroom

Tile flooring with 3 piece bathroom suite in white, hand held shower over bath, separate showering enclosure, heated towel rail and spotlighting

EXTERNAL

Beautifully presented South-facing rear garden, landscaped to accommodate a covering Jacuzzi Spa area with large Summerhouse, decked patio area and laid to lawn. Benefiting from a private Sunny aspect, enclosed by a combination of boundary brick wall and panel fencing. Ample storage to the side of the property and gated access to the front, where you are greeted with a very generous driveway, capable of accommodating multiple cars, leading to a detached double garage.





