



7 Mill Bridge Close, Crewe, CW1 5DZ
£291,000

PROPERTY
PERSPECTIVE

The Property Perspective

Garden Place, Victoria Street, Altrincham, WA14 1ET

Tel: 08456 800 262 Fax: 08456 800 272

Email: enquiries@thepropertyperspective.co.uk www.thepropertyperspective.co.uk

PROPERTY
PERSPECTIVE

We are delighted to offer for sale this modern detached house located on a popular development with access to amenities and transport links plus within catchment of OFSTED 'Good' Primary and Secondary schools.

The property benefits from gas central heating and PVCu double glazing. There is a modern dining kitchen plus contemporary bathroom, en suite and WC. Items of note include French doors to rear, off road parking and a well presented rear garden. There are ample sockets and media points. The property is ready to move in with flooring included.

To the ground floor is an entrance hall, lounge, dining kitchen, utility room, conservatory and WC. There are 3 bedrooms, the master with en suite plus a family bathroom off the first floor landing.

There are well presented and upgraded gardens. There is off road parking to the front.

Tenure - Freehold
Council Tax - Band C

The property comprises

Ground Floor

Hallway

With fitted flooring

Lounge 13'11" x 11'5" (4.25m x 3.49m)

Walk in bay window and fireplace plus fitted flooring.

Dining Kitchen 19'9" x 9'4" (6.02m x 2.85m)

Having a comprehensive range of modern wall and base units with complimenting laminate worktops plus tiling. Integrated oven, hob, hood, dishwasher and fridge. French doors for access to conservatory.

Utility 8'1" x 8'1" (2.47m x 2.47m)

Utility 8'3" x 7'10" (2.52m x 2.40m)

WC 5'10" x 3'2" (1.78m x 0.99m)

White sanitary ware plus tiling.

First Floor

Landing

With fitted flooring.

Bedroom 1 12'1" x 11'5" (3.69m x 3.50m)

Built in cabinets plus access to en suite with fitted flooring.

En Suite 5'3" x 4'11" (1.61m x 1.51m)

White sanitary ware, tiling, chrome ladder radiator plus shower.

Bedroom 2 18'9" x 8'4" (5.73m x 2.55m)

Built in store plus fitted flooring.

Bedroom 3 9'5" x 7'11" (2.89m x 2.42m)

With fitted flooring.

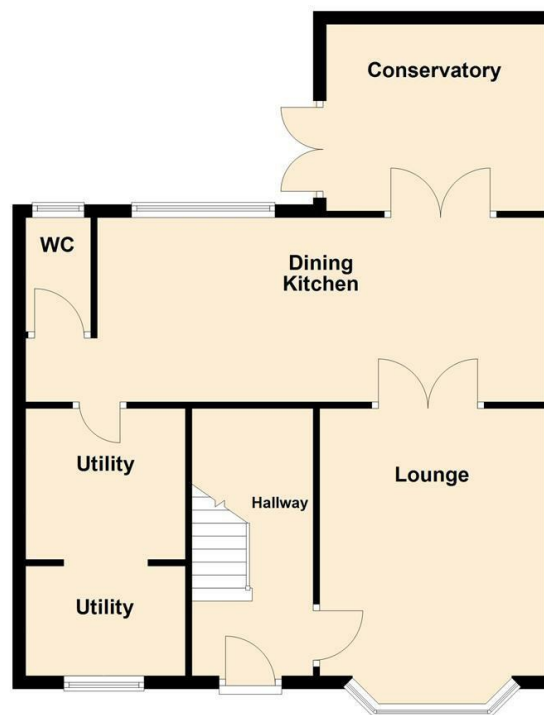
Bathroom 7'8" x 6'2" (2.36m x 1.88m)

Modern 4 piece suite plus tiling.

External

The gardens of the property are well presented. There is off road parking to the front.

Ground Floor



First Floor



7 Mill Bridge Close, Crewe