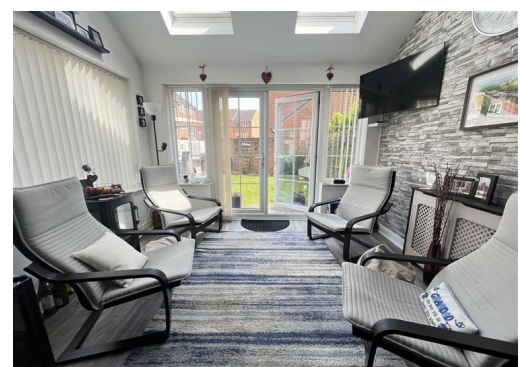




Sherwood Walk, Middleton, LS10 4FZ

£359,995

STUNNING FAMILY HOME!!! We are delighted to be able to present to you this beautifully presented and maintained 4 bedroom semi-detached house, situated in New Forest Village!



2 Sherwood Walk, Middleton, LS10 4FZ

GROUND FLOOR

Lounge 11'7" x 16'8" (3.54 x 5.09m)

Carpet flooring with curtains and blind

Kitchen/diner 11'3" x 16'7" (3.43 x 5.07m)

High quality wood effect laminate flooring with open aspect through to sun room. A range of fitted kitchen units, worktops and integrated kitchen appliances, including oven, hob, hood, fridge-freezer and dishwasher

Sun Room 9'5" x 11'2" (2.88 x 3.42m)

High quality wood effect laminate flooring with patio doors leading to the rear garden and blind

WC/cloaks

Tile flooring with 2 piece bathroom suite in white and radiator

FIRST FLOOR

Bedroom 11'6" x 13'10" (3.53 x 4.24m)

Carpet flooring with window to the front/side elevation, fitted wardrobes and blind

En-suite

Tile flooring with 3 piece bathroom suite in white, shower over bath with glass splash-back screen, partially tiled decor and heated towel rail

Bedroom 14'3" x 11'2" (4.35 x 3.42m)

Carpet flooring with window to the front/side elevation, fitted wardrobes and blind

Bathroom

High gloss tile flooring with 3 piece bathroom suite in white, partially tiled decor and radiator

SECOND FLOOR

Bedroom 11'8" x 11'8" (3.58 x 3.57m)

Carpet flooring with window to the front elevation and blind

Bedroom 11'8" x 11'5" (3.58 x 3.48m)

Carpet flooring with window to the front/side elevation and blind

Shower Room

Tile flooring with 2 piece bathroom suite in white, separate showering enclosure, partially tiled decor and radiator

EXTERNAL

Lovely landscaped garden with laid to lawn and patio area, enclosed by a boundary wall. Detached single garage with up&over door and single driveway.





