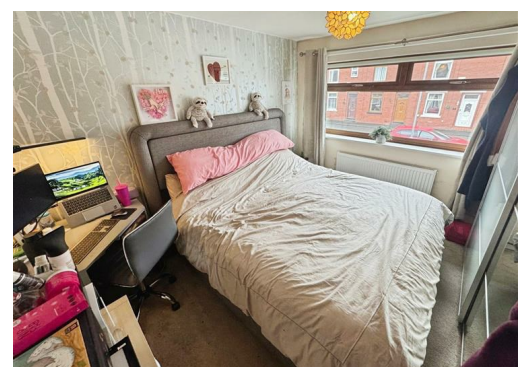




Manchet Street, Rochdale, OL11 3BN

£184,995

PRICED TO SELL NOW!!! Great value 3 bedroom mid terraced house close to Rochdale Town Centre. Dining lounge & modern kitchen, 3 well proportioned bedrooms & bathroom. Well presented gardens. **MUST BE VIEWED!!**



12 Manchet Street, Rochdale, OL11 3BN

We are delighted to offer for sale this well priced 3 bedroom mid terraced house located in a popular area with access to amenities and transport links plus within catchment of OFSTED 'Good' Primary and Secondary schools.

The property benefits from gas central heating and PVCu double glazing. There is a modern kitchen with oven, hob, hood, fridge and microwave.. There are ample sockets and media points. The property is ready to move in with flooring included.

The ground floor consists of the porch, lounge, kitchen plus utility room. The first floor has 3 bedrooms and family bathroom accessed of the landing.

The externals of the property are well presented. The front of the property has off road parking leading to the garage.

Tenure - Freehold
Council Tax - Band B

The property comprises.

Ground Floor

Entrance Hall

With fitted flooring.

Lounge Dining Room 23'7" (max) x 17'9" (max) (7.20 (max) x 5.43 (max))

Light through room with fitted flooring.

Kitchen 8'4" x 8'2" (2.55 x 2.49)

Having a comprehensive range of wall and base units with complimenting laminate worktops. Includes oven, hob, hood, fridge, microwave plus tiled walls. With fitted flooring.

Utility 8'2" x 5'3" (2.49 x 1.62)

Laminate work tops. With fitted flooring.

First Floor

Landing

With fitted flooring.

Bedroom 1 10'11" x 10'0" (3.33 x 3.05)

With fitted flooring.

Bedroom 2 12'5" x 9'2" (3.79 x 2.81)

With fitted flooring.

Bedroom 3 8'5" x 8'4" (2.59 x 2.55)

With fitted flooring.

Bathroom 7'5" x 5'4" (2.28 x 1.65)

Having modern white sanitary ware, ladder radiator, shower with screen to bath plus tiled walls. With fitted flooring.

External

The externals of the property are well presented. The front of the property has off road parking leading to the garage.

