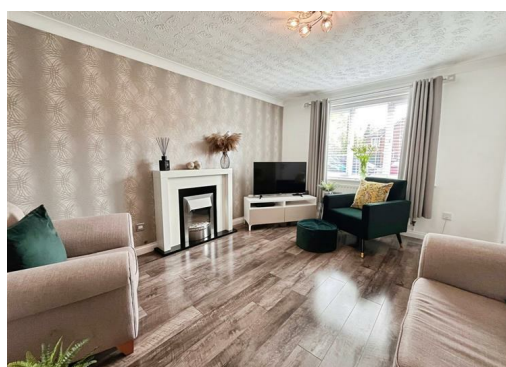
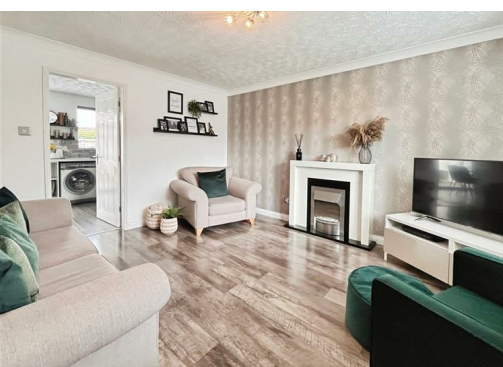




**Winsmoor Drive, Hindley, WN2 3SP**

**£204,995**

**EXCELLENT VALUE FOR MONEY!!!** We are delighted to be able to present to you this beautifully presented and maintained 3 bedroom semi-detached house, situated in Hindley!



# 31 Winsmoor Drive, Hindley, WN2 3SP

## GROUND FLOOR

### Lounge 14'0" x 11'11" (4.29 x 3.64m)

High quality wood effect laminate flooring with electric fireplace, curtains and blind

### Kitchen/diner 8'9" x 15'5" (2.69 x 4.70m)

High quality wood effect flooring with patio doors leading through to the conservatory and spotlighting under-stair storage cupboard. A range of fitted kitchen units, worktops and integrated kitchen appliances, including oven, hob and hood

### Conservatory 10'4" x 9'3" (3.18 x 2.83m)

High quality wood effect laminate flooring with patio doors leading to the rear garden and blind

## FIRST FLOOR

### Bedroom 10'0" x 8'8" (3.06 x 2.66m)

High quality wood effect laminate flooring with window to the front elevation, curtains, blind and fitted wardrobes

### Bedroom 11'4" x 8'8" (3.46 x 2.65m)

High quality wood effect laminate flooring with window to the rear elevation, curtains and blind

### Bedroom 8'2" x 6'5" (2.50 x 1.97m)

High quality wood effect laminate flooring with window to the rear elevation, fitted wardrobes and blind

## Bathroom

Tile flooring with 3 piece bathroom suite in white, shower over bath glass splash-back screen, radiator and blind

## EXTERNAL

Deceptively spacious and well presented rear garden, enclosed by panel fencing with laid to lawn and patio area. Driveway to the front of the property for 2 vehicles.





