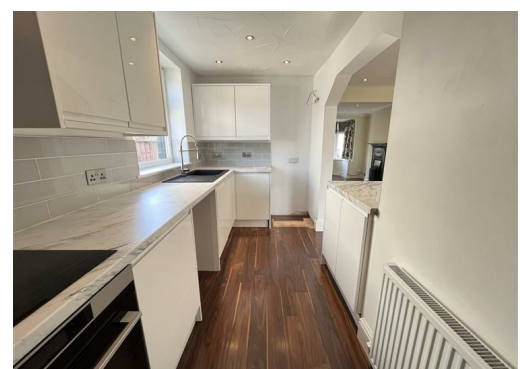




Bromsgrove Avenue, Bispham, FY2 9LX

£179,995

EXCELLENT VALUE FOR MONEY!!! We are delighted to be able to present to you this well presented and maintained 3 bedroom semi-detached house, situated in Bispham!



4 Bromsgrove Avenue, Bispham, FY2 9LX

GROUND FLOOR

Lounge area 15'8" x 10'7" (4.80 x 3.25m)

High quality wood effect laminate flooring with bay fronted window, spotlighting, curtains and blind

Dining area 13'10" x 10'0" (4.23 x 3.07m)

High quality wood effect laminate flooring with patio doors leading to the rear garden, spotlighting and curtains

Kitchen 13'8" x 5'6" (4.18 x 1.70m)

High quality wood effect laminate flooring with spotlighting. A range of fitted kitchen units, worktops and integrated kitchen appliances, including oven, hob, hood and slim-line dishwasher

WC/cloaks

Wood effect laminate flooring with 2 piece bathroom suite in white and radiator

FIRST FLOOR

Bedroom 8'9" x 15'8" (2.68 x 4.80)

Carpet flooring with bay fronted window, curtains and fitted wardrobes

Bedroom 14'4" x 9'7" (4.39 x 2.93m)

Carpet flooring with window to the rear elevation and curtains

Bedroom 6'5" x 7'11" (1.98 x 2.43)

Carpet flooring with window to the front elevation

Bathroom

High quality vinyl flooring with 3 piece bathroom suite in white, shower over bath with glass splash-back screen, spotlighting, heated towel rail and blind

EXTERNAL

Well presented and private South-facing rear garden, enclosed by panel fencing with artificial lawn and patio area. Large driveway to the front with

gated access to the rear, leading to a detached single garage with up&over door.





