



**19 Potteries Way, Rainford, St Helens, WA11 8GP**  
**£284,995**



## GROUND FLOOR

Living/diner 16'10" x 13'8" (max) (5.14 x 4.17 (max))

Kitchen 10'2" x 6'7" (3.1 x 2.03)

WC/cloaks

## FIRST FLOOR

Bedroom 2 13'8" x 8'0" (max) (4.17 x 2.46 (max))

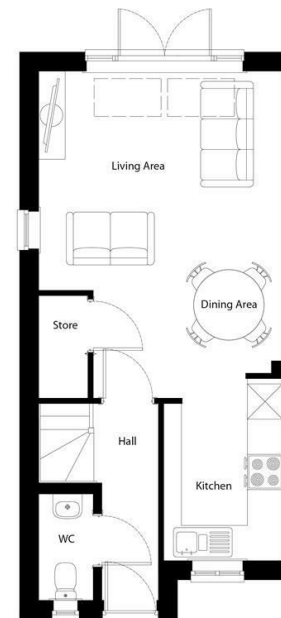
Bedroom 3 8'10" x 6'8" (2.7 x 2.04m)

Bathroom

## SECOND FLOOR

Bedroom 1 13'1" x 10'2" (3.99 x 3.12)

En-suite



**LIVING/DINING**  
5.14m (max) x 4.17m (max)  
16'10" (max) x 13'8" (max)

**KITCHEN**  
3.1m x 2.03m  
10'2" x 6'8"

**WC**  
1.86m X 0.92m  
6'1" X 3'0"