

OFFERS IN THE REGION OF

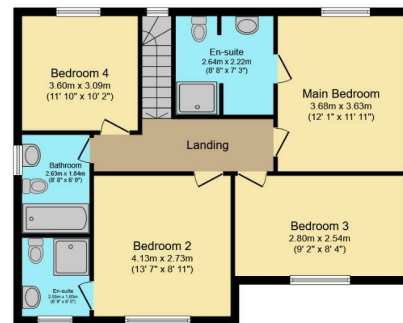
£475,000

Beaumont Street

Huddersfield, HD8 9RJ



Ground Floor
 Floor area 108.2 sq.m. (1,165 sq.ft.)



First Floor
 Floor area 78.1 sq.m. (840 sq.ft.)

Total floor area: 186.3 sq.m. (2,005 sq.ft.)

This floor plan is for illustrative purposes only. It is not drawn to scale. Any measurements, floor areas (including any total floor area), openings and orientations are approximate. No details are guaranteed, they cannot be relied upon for any purpose and do not form any part of any agreement. No liability is taken for any error, omission or misstatement. A party must rely upon its own inspection(s). Powered by www.propertybox.io



Energy Efficiency Rating		
	Current	Potential
Very energy efficient - lower running costs		
(92 plus) A		
(81-91) B		
(69-80) C		
(55-68) D		
(39-54) E		
(21-38) F		
(1-20) G		
Not energy efficient - higher running costs		
England & Wales	72	81
	EU Directive 2002/91/EC	



Agents Note: Whilst every care has been taken to prepare these particulars, they are for guidance purposes only. All measurements are approximate and are for general guidance purposes only and whilst every care has been taken to ensure their accuracy, they should not be relied upon and potential buyers/tenants are advised to recheck the measurements

OFFICE ADDRESS
 12 St Marys Street
 Penistone
 Sheffield
 South Yorkshire
 S36 6DT

OFFICE DETAILS
 01226 766755
 info@pennineproperty.co.uk