

OFFERS OVER

£499,950

Foxmill View

Millhouse Green, S36 9AB

PROPERTY SUMMARY

Tucked away in the ever-popular village of Millhouse Green, this impressive modern detached family home at Fox Mill View offers space, quality and lifestyle in equal measure. Thoughtfully designed and notably larger than many comparable homes, the property features five bedrooms and versatile reception spaces, providing exceptional flexibility for modern family living, entertaining and working from home.

5



2



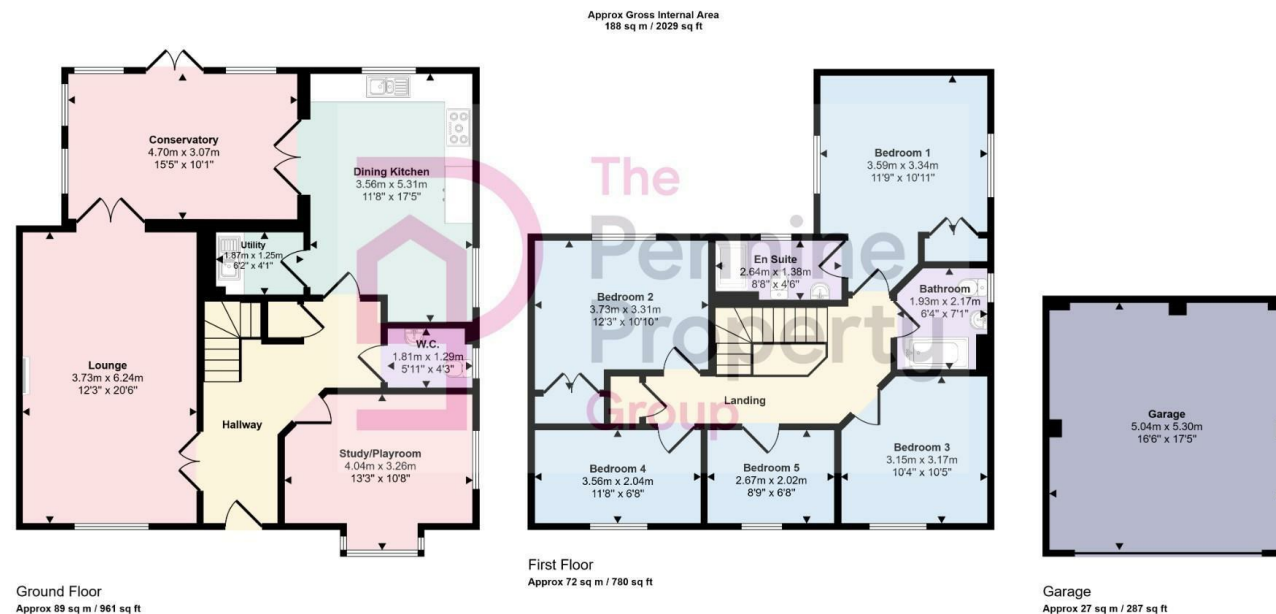
3









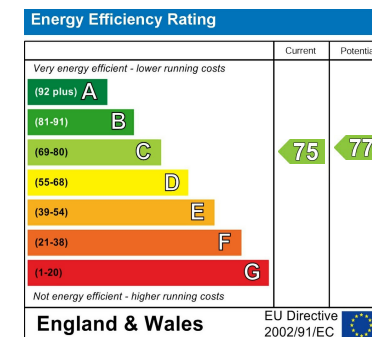


LOCAL AUTHORITY
Barnsley Metropolitan Borough Council

TENURE
Freehold

COUNCIL TAX BAND
E

VIEWINGS
By prior appointment only



Agents Note: Whilst every care has been taken to prepare these particulars, they are for guidance purposes only. All measurements are approximate and are for general guidance purposes only and whilst every care has been taken to ensure their accuracy, they should not be relied upon and potential buyers/tenants are advised to recheck the measurements

OFFICE ADDRESS
12 St Marys Street
Penistone
Sheffield
South Yorkshire
S36 6DT

OFFICE DETAILS
01226 766755
info@pennineproperty.co.uk