



OFFERS AROUND

£265,000

Ivy Bank Close

Sheffield, S36 7GT

PROPERTY SUMMARY

Tucked away in the heart of this charming village, this exceptional four-bedroom home is ideal for families, professionals, or anyone seeking a peaceful rural escape with convenient access to nearby amenities. Spanning three levels, this modern and stylish property features an open-plan living space on the ground floor and a spacious master bedroom with an en-suite on the second floor.

4



2



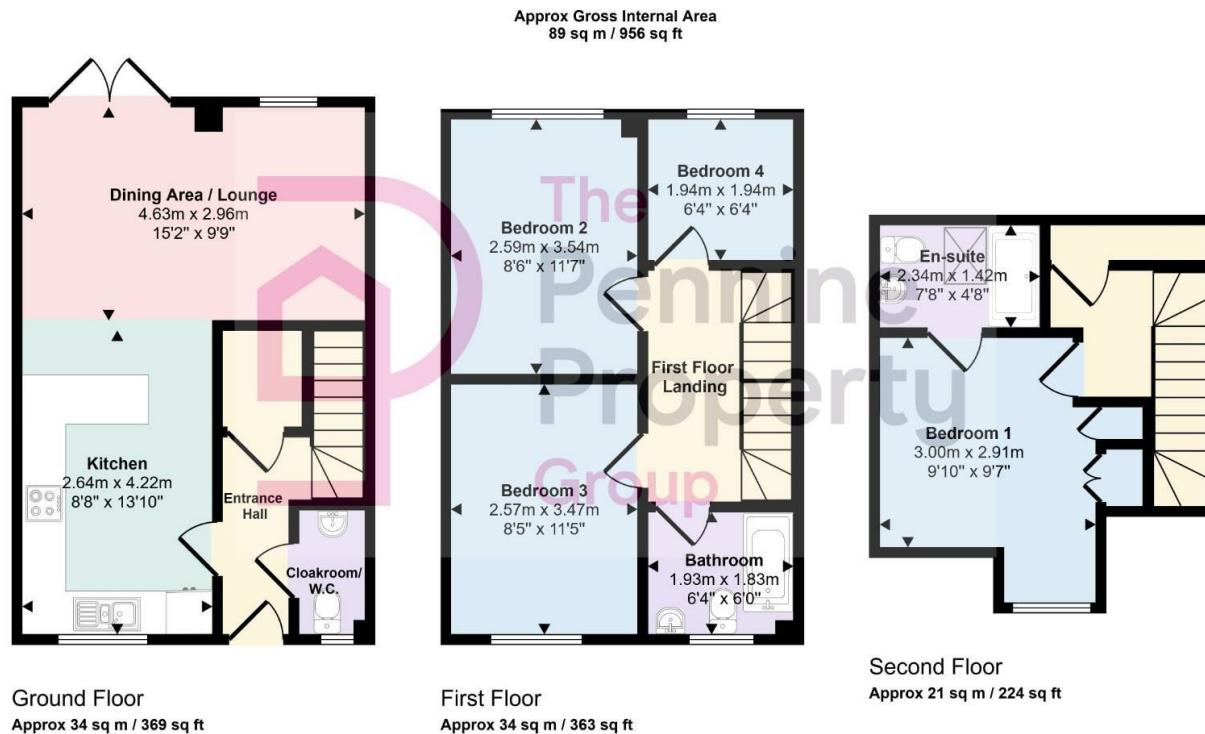
1











This floorplan is only for illustrative purposes and is not to scale. Measurements of rooms, doors, windows, and any items are approximate and no responsibility is taken for any error, omission or mis-statement. Icons of items such as bathroom suites are representations only and may not look like the real items. Made with Made Snappy 360.

LOCAL AUTHORITY
BMBC

TENURE
Freehold

COUNCIL TAX BAND
C

VIEWINGS
By prior appointment only

Energy Efficiency Rating		
	Current	Potential
Very energy efficient - lower running costs		
(92 plus) A		78
(81-91) B		
(69-80) C		
(55-68) D		
(39-54) E		
(21-38) F		90
(1-20) G		
Not energy efficient - higher running costs		
England & Wales		EU Directive 2002/91/EC

Agents Note: Whilst every care has been taken to prepare these particulars, they are for guidance purposes only. All measurements are approximate and are for general guidance purposes only and whilst every care has been taken to ensure their accuracy, they should not be relied upon and potential buyers/tenants are advised to recheck the measurements

OFFICE ADDRESS

12 St Marys Street
Penistone
Sheffield
South Yorkshire
S36 6DT

OFFICE DETAILS

01226 766755
info@pennineproperty.co.uk