

OFFERS IN THE REGION OF

£475,000

Alsop House, 7 Beaumont Street

Emley, HD8 9RJ

PROPERTY SUMMARY

Nestled in the charming village of Emley, Alsop House is a stunning family home. Offering spacious four bedroomed accommodation with three bathrooms and two reception rooms. A modern home in rural village with excellent schools nearby.

4



3



2



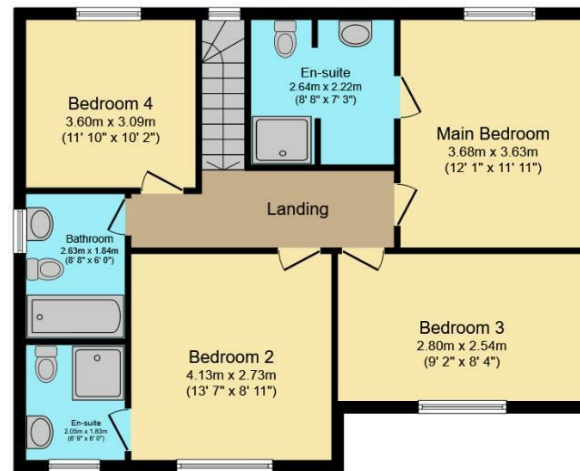








Ground Floor
Floor area 108.2 sq.m. (1,165 sq.ft.)



First Floor
Floor area 78.1 sq.m. (840 sq.ft.)

Total floor area: 186.3 sq.m. (2,005 sq.ft.)

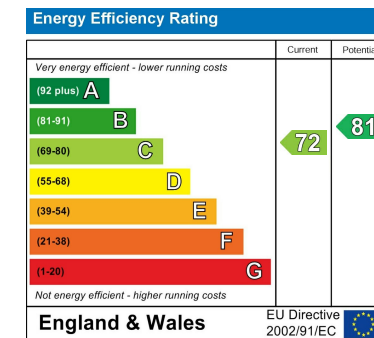
This floor plan is for illustrative purposes only. It is not drawn to scale. Any measurements, floor areas (including any total floor area), openings and orientations are approximate. No details are guaranteed, they cannot be relied upon for any purpose and do not form any part of any agreement. No liability is taken for any error, omission or misstatement. A party must rely upon its own inspection(s). Powered by www.Propertybox.io

LOCAL AUTHORITY
Kirklees Council

TENURE
Freehold

COUNCIL TAX BAND
E

VIEWINGS
By prior appointment only



Agents Note: Whilst every care has been taken to prepare these particulars, they are for guidance purposes only. All measurements are approximate and are for general guidance purposes only and whilst every care has been taken to ensure their accuracy, they should not be relied upon and potential buyers/tenants are advised to recheck the measurements

OFFICE ADDRESS
12 St Marys Street
Penistone
Sheffield
South Yorkshire
S36 6DT

OFFICE DETAILS
01226 766755
info@pennineproperty.co.uk