

OFFERS IN THE REGION OF

£525,000

Kirkhill Bank

Penistone, S36 9UX

PROPERTY SUMMARY

Kirkhill Bank is such a desirable location, not only does it have large four bedroomed accommodation with three bathrooms but it has the views. The extended accommodation is superb throughout and then when you venture into the south facing garden it is just stunning and private.

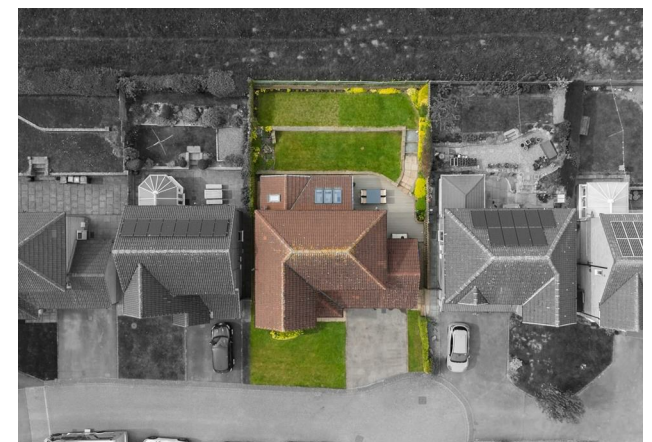
4



3



2

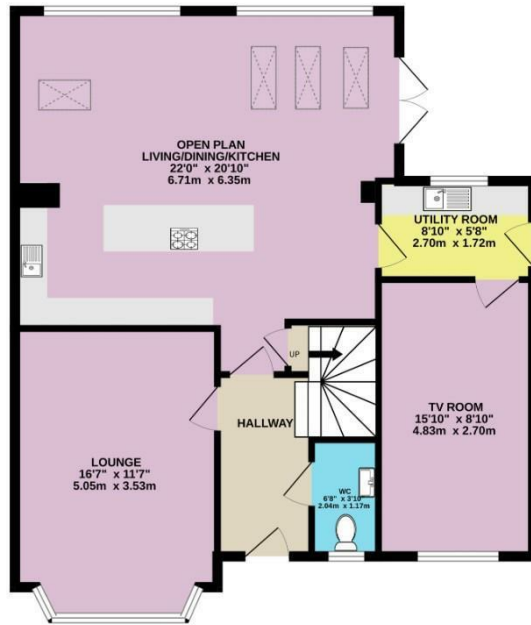




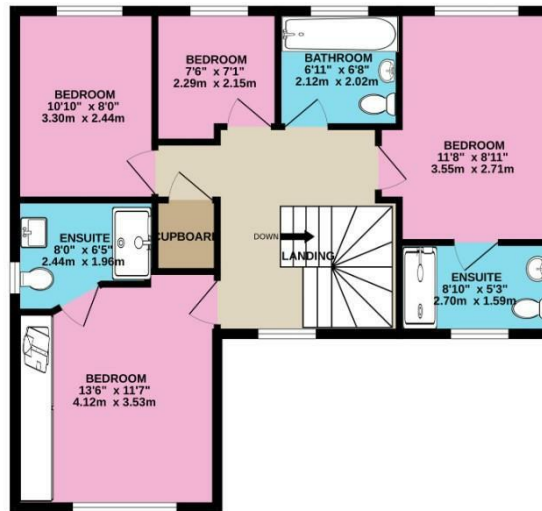




GROUND FLOOR
883 sq.ft. (82.1 sq.m.) approx.



1ST FLOOR
686 sq.ft. (63.7 sq.m.) approx.



TOTAL FLOOR AREA: 1570 sq.ft. (145.8 sq.m.) approx.

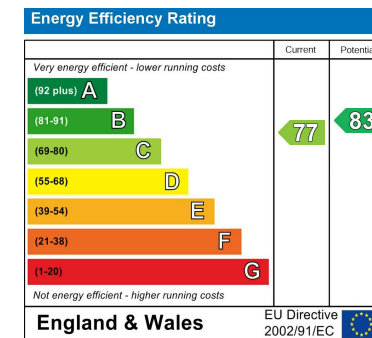
Whilst every attempt has been made to ensure the accuracy of the floorplan contained here, measurements of doors, windows, rooms and any other items are approximate and no responsibility is taken for any error, omission or mis-statement. This plan is for illustrative purposes only and should be used as such by any prospective purchaser. The services, systems and appliances shown have not been tested and no guarantee as to their operability or efficiency can be given.
Made with Metropix ©2025

LOCAL AUTHORITY
BMBC

TENURE
Freehold

COUNCIL TAX BAND
E

VIEWINGS
By prior appointment only



Agents Note: Whilst every care has been taken to prepare these particulars, they are for guidance purposes only. All measurements are approximate and are for general guidance purposes only and whilst every care has been taken to ensure their accuracy, they should not be relied upon and potential buyers/tenants are advised to recheck the measurements

OFFICE ADDRESS

12 St Marys Street
Penistone
Sheffield
South Yorkshire
S36 6DT

OFFICE DETAILS

01226 766755
info@pennineproperty.co.uk