



The  
Pennine  
Property  
Group



OFFERS IN THE REGION OF

**£525,000**

**Kirkhill Bank**

Penistone, S36 9UX



## PROPERTY SUMMARY

Kirkhill Bank is such a desirable location, not only does it have large four bedroomed accommodation with three bathrooms but it has the views. The extended accommodation is superb throughout and then when you venture into the south facing garden it is just stunning and private.

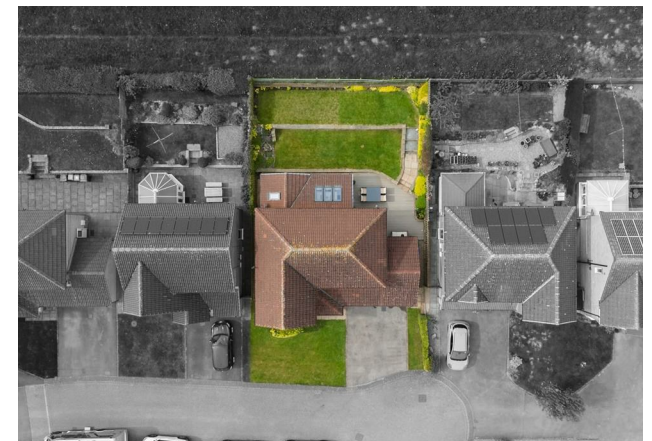
4



3



2









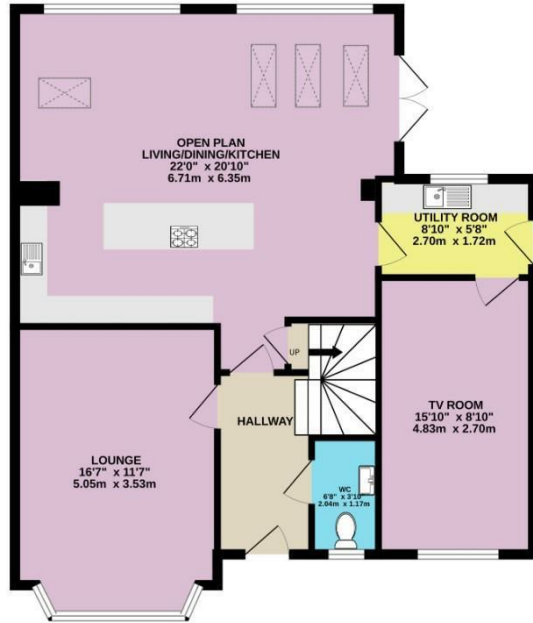




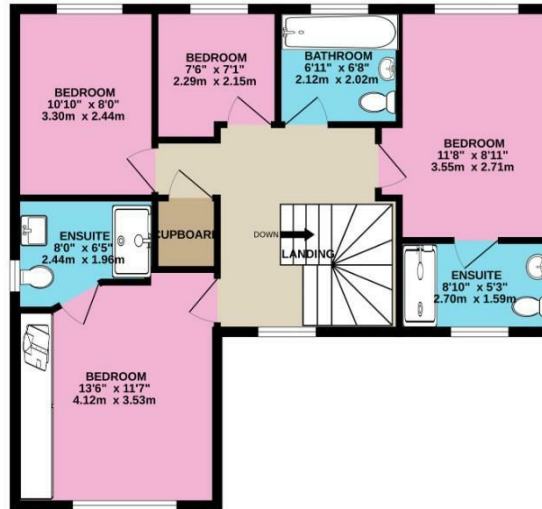




GROUND FLOOR  
883 sq.ft. (82.1 sq.m.) approx.



1ST FLOOR  
686 sq.ft. (63.7 sq.m.) approx.



TOTAL FLOOR AREA: 1570 sq.ft. (145.8 sq.m.) approx.

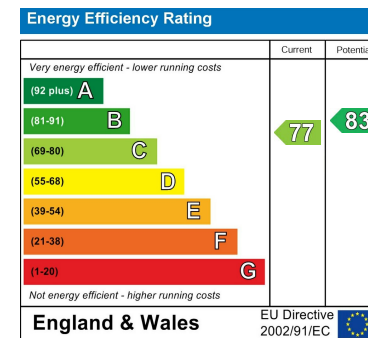
Whilst every attempt has been made to ensure the accuracy of the floorplan contained here, measurements of doors, windows, rooms and any other items are approximate and no responsibility is taken for any error, omission or mis-statement. This plan is for illustrative purposes only and should be used as such by any prospective purchaser. The services, systems and appliances shown have not been tested and no guarantee as to their operability or efficiency can be given.  
Made with Metropix ©2025

**LOCAL AUTHORITY**  
BMBC

**TENURE**  
Freehold

**COUNCIL TAX BAND**  
E

**VIEWINGS**  
By prior appointment only



Agents Note: Whilst every care has been taken to prepare these particulars, they are for guidance purposes only. All measurements are approximate and are for general guidance purposes only and whilst every care has been taken to ensure their accuracy, they should not be relied upon and potential buyers/tenants are advised to recheck the measurements

**OFFICE ADDRESS**

12 St Marys Street  
Penistone  
Sheffield  
South Yorkshire  
S36 6DT

**OFFICE DETAILS**

01226 766755  
info@pennineproperty.co.uk