

 Pennine Property  
Group  
**For Sale**

OFFERS IN THE REGION OF

**£239,950**

**Hoyland Close**

Millhouse Green, S36 9NJ



## PROPERTY SUMMARY

This charming two-bedroom semi-detached dormer bungalow offers a rare opportunity, as homes on this sought-after street seldom come to market. Available with no vendor chain, the property has been lovingly maintained by the same owner since new, evident in the warmth and care throughout.

2



1



1





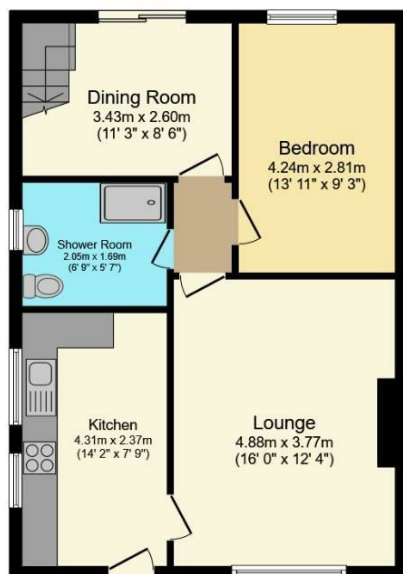






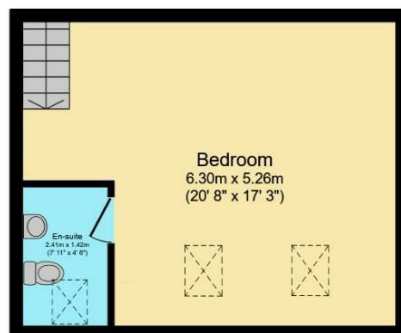






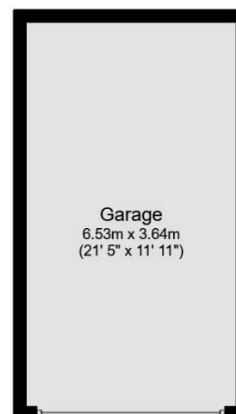
### Ground Floor

Floor area 58.5 m<sup>2</sup> (629 sq.ft.)



### First Floor

Floor area 32.7 m<sup>2</sup> (353 sq.ft.)



### Garage

Floor area 23.3 m<sup>2</sup>  
(251 sq.ft.)

**TOTAL: 114.5 m<sup>2</sup> (1,232 sq.ft.)**

This floor plan is for illustrative purposes only. It is not drawn to scale. Any measurements, floor areas (including any total floor area), openings and orientations are approximate. No details are guaranteed, they cannot be relied upon for any purpose and do not form any part of any agreement. No liability is taken for any error, omission or misstatement. A party must rely upon its own inspection(s). Powered by www.Propertybox.io

### LOCAL AUTHORITY

BMBC

### TENURE

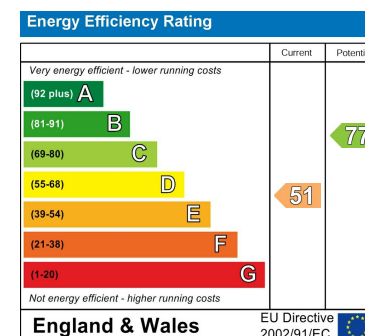
Freehold

### COUNCIL TAX BAND

C

### VIEWINGS

By prior appointment only



Agents Note: Whilst every care has been taken to prepare these particulars, they are for guidance purposes only. All measurements are approximate and are for general guidance purposes only and whilst every care has been taken to ensure their accuracy, they should not be relied upon and potential buyers/tenants are advised to recheck the measurements

### OFFICE ADDRESS

12 St Marys Street  
Penistone  
Sheffield  
South Yorkshire  
S36 6DT

### OFFICE DETAILS

01226 766755  
info@pennineproperty.co.uk