

OFFERS IN THE REGION OF

£119,950

Regency House

Penistone, S36 7AD



PROPERTY SUMMARY

A charming modern apartment located in the delightful town of Penistone, offering a perfect blend of contemporary living and comfort.

Featuring one well-proportioned bedroom, a modern open plan kitchen / lounge and a larger than usual bathroom with separate shower. The surrounding area of Penistone boasts a vibrant community with a range of local shops, cafes, and parks, making it an excellent choice for those who appreciate a friendly neighbourhood.

1



1



1

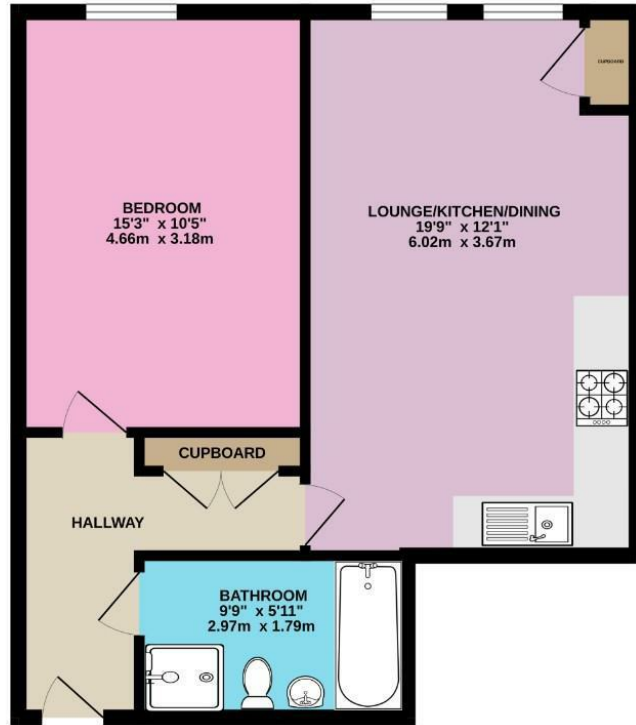








GROUND FLOOR
527 sq.ft. (49.0 sq.m.) approx.



TOTAL FLOOR AREA: 527 sq.ft. (49.0 sq.m.) approx.
Whilst every attempt has been made to ensure the accuracy of the floorplan contained here, measurements of doors, windows, rooms and any other items are approximate and no responsibility is taken for any error, omission or mis-statement. This plan is for illustrative purposes only and should be used as such by any prospective purchaser. The services, systems and appliances shown have not been tested and no guarantee as to their operability or efficiency can be given.
Made with Metropix ©2024

LOCAL AUTHORITY
BMBC

TENURE
Leasehold

COUNCIL TAX BAND
B

VIEWINGS
By prior appointment only

Energy Efficiency Rating		
	Current	Potential
Very energy efficient - lower running costs		
(92 plus) A		
(81-91) B	83	83
(69-80) C		
(55-68) D		
(39-54) E		
(21-38) F		
(1-20) G		
Not energy efficient - higher running costs		
England & Wales	EU Directive 2002/91/EC	

Agents Note: Whilst every care has been taken to prepare these particulars, they are for guidance purposes only. All measurements are approximate and are for general guidance purposes only and whilst every care has been taken to ensure their accuracy, they should not be relied upon and potential buyers/tenants are advised to recheck the measurements

OFFICE ADDRESS

12 St Marys Street
Penistone
Sheffield
South Yorkshire
S36 6DT

OFFICE DETAILS

01226 766755
info@pennineproperty.co.uk