

OFFERS IN THE REGION OF

**£248,000**

**Longley Ings**

Sheffield, S36 8ZS

## PROPERTY SUMMARY

A superb example of how to renovate a property. This truly stunning end of terrace home offers three bedrooms, two bathroomed accommodation in a highly desirable rural village location with excellent long countryside walks on the doorstep and easy access for commuting to various surrounding towns and cities.

3



2



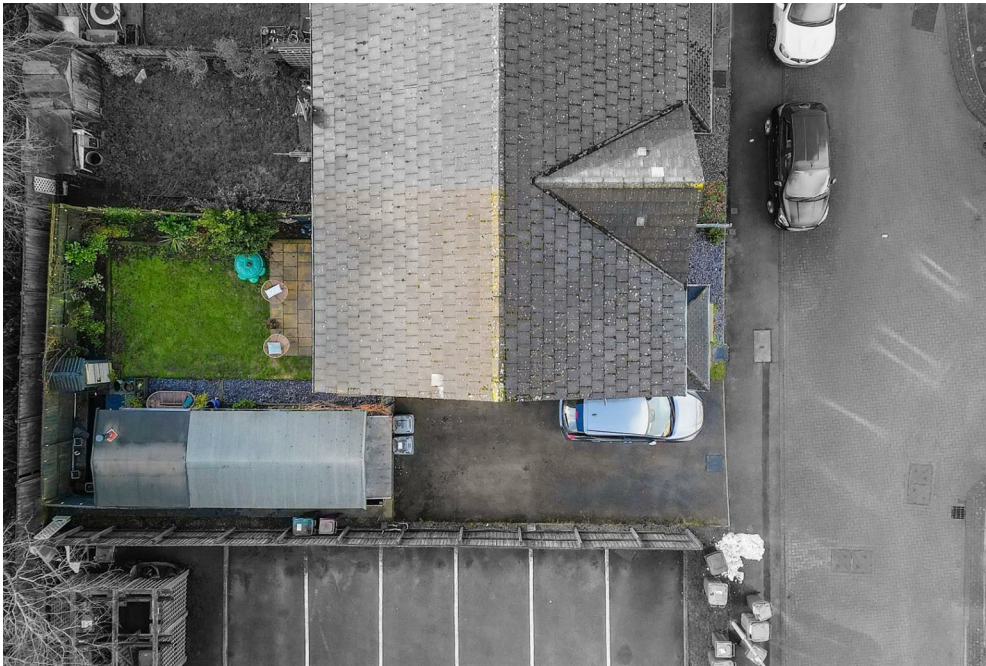
1







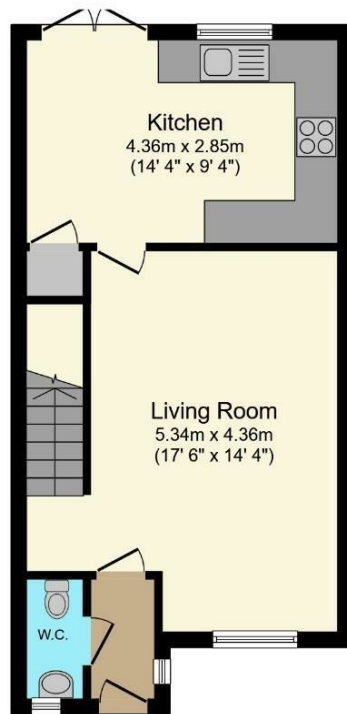






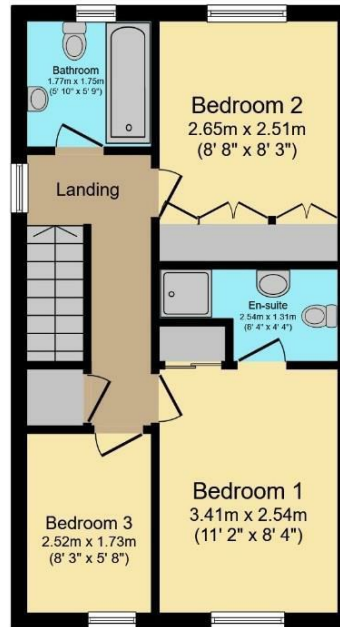






### Ground Floor

Floor area 37.8 m<sup>2</sup> (407 sq.ft.)



### First Floor

Floor area 36.1 m<sup>2</sup> (389 sq.ft.)

**TOTAL: 74.0 m<sup>2</sup> (796 sq.ft.)**

This floor plan is for illustrative purposes only. It is not drawn to scale. Any measurements, floor areas (including any total floor area), openings and orientations are approximate. No details are guaranteed, they cannot be relied upon for any purpose and do not form any part of any agreement. No liability is taken for any error, omission or misstatement. A party must rely upon its own inspection(s). Powered by [www.Propertybox.io](http://www.Propertybox.io)

### LOCAL AUTHORITY

Barnsley

### TENURE

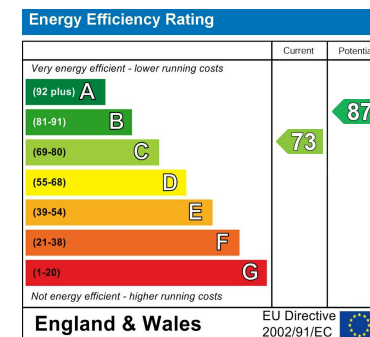
House - End Terrace

### COUNCIL TAX BAND

C

### VIEWINGS

By prior appointment only



Agents Note: Whilst every care has been taken to prepare these particulars, they are for guidance purposes only. All measurements are approximate and are for general guidance purposes only and whilst every care has been taken to ensure their accuracy, they should not be relied upon and potential buyers/tenants are advised to recheck the measurements

### OFFICE ADDRESS

12 St Marys Street  
Penistone  
Sheffield  
South Yorkshire  
S36 6DT

### OFFICE DETAILS

01226 766755  
[info@pennineproperty.co.uk](mailto:info@pennineproperty.co.uk)