



OFFERS IN THE REGION OF

£450,000

Mortimer Road

Penistone, S36 6DE

PROPERTY SUMMARY

A superb versatile detached home offering spacious split level accommodation with four bedrooms, three bathrooms and a magnificent integral garage measuring over 400 sq ft which provides many possible uses. Conveniently located close to Penistone centre, you'll have easy access to local amenities and excellent nearby schools.

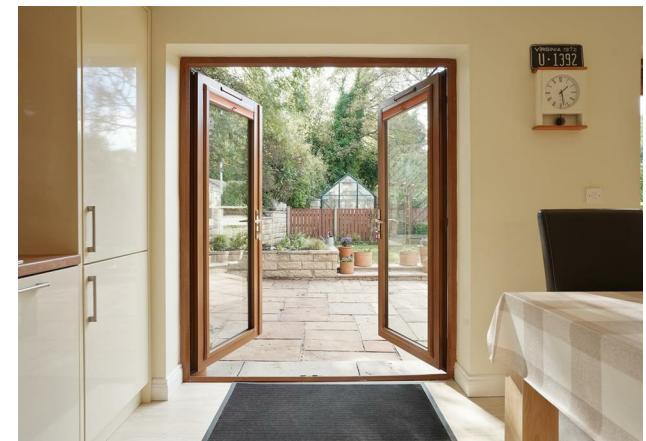
4



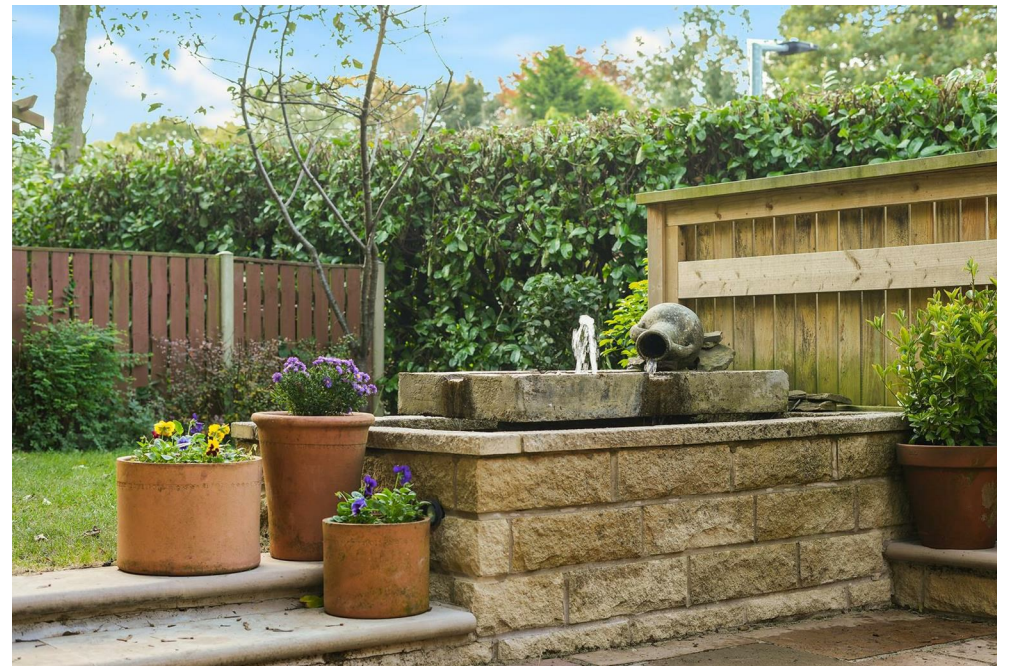
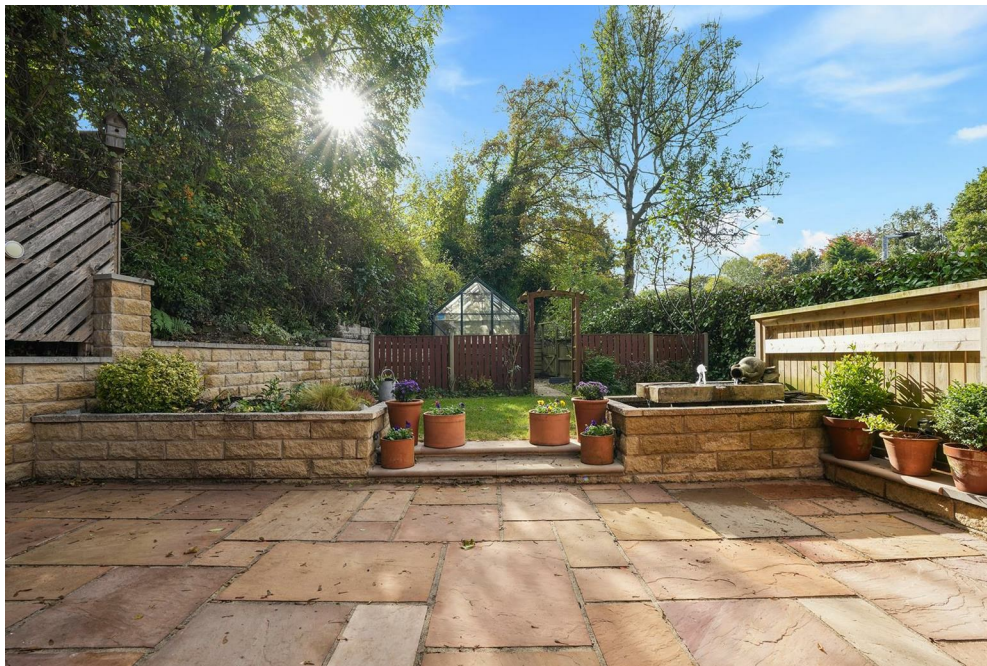
3



1







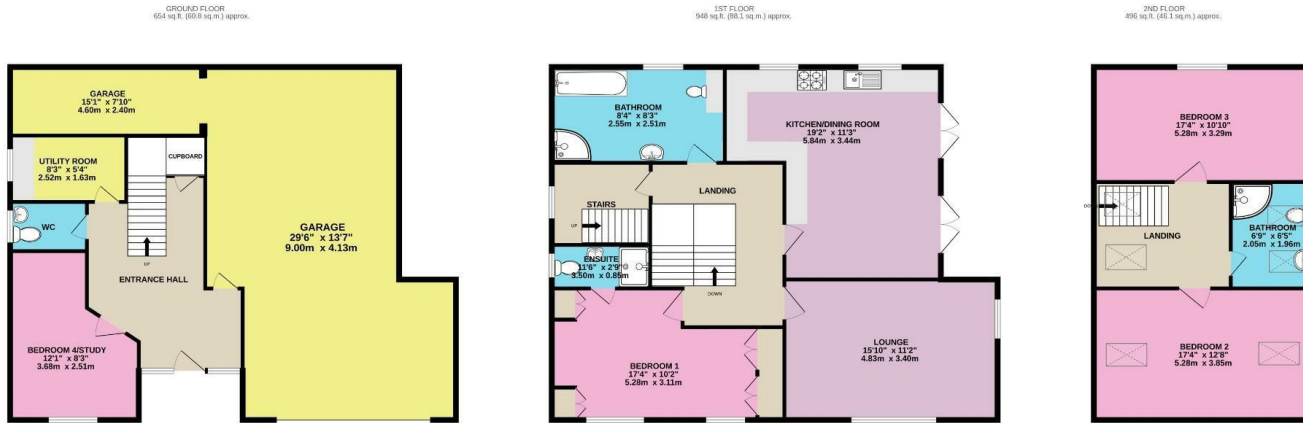


LOCAL AUTHORITY
BMBC

TENURE
House - Detached

COUNCIL TAX BAND
E

VIEWINGS
By prior appointment only



TOTAL FLOOR AREA : 2099 sq.ft. (195.0 sq.m.) approx.

Whilst every attempt has been made to ensure the accuracy of the floorplan contained here, measurements of doors, windows, rooms and any other items are approximate and no responsibility is taken for any error, omission or mis-statement. This plan is for illustrative purposes only and should be used as such by any prospective purchaser. The services, systems and appliances shown have not been tested and no guarantee as to their operability or efficiency can be given.
Made with Metropix ©2024

Energy Efficiency Rating		Current	Potential
Very energy efficient - lower running costs			
(82 plus) A			
(81-81) B		79	85
(69-80) C			
(55-68) D			
(39-54) E			
(21-38) F			
(1-20) G			
Not energy efficient - higher running costs			
England & Wales		EU Directive 2002/91/EC	

Agents Note: Whilst every care has been taken to prepare these particulars, they are for guidance purposes only. All measurements are approximate and are for general guidance purposes only and whilst every care has been taken to ensure their accuracy, they should not be relied upon and potential buyers/tenants are advised to recheck the measurements

OFFICE ADDRESS

12 St Marys Street
Penistone
Sheffield
South Yorkshire
S36 6DT

OFFICE DETAILS

01226 766755
info@pennineproperty.co.uk