



The  
Pennine  
Property  
Group

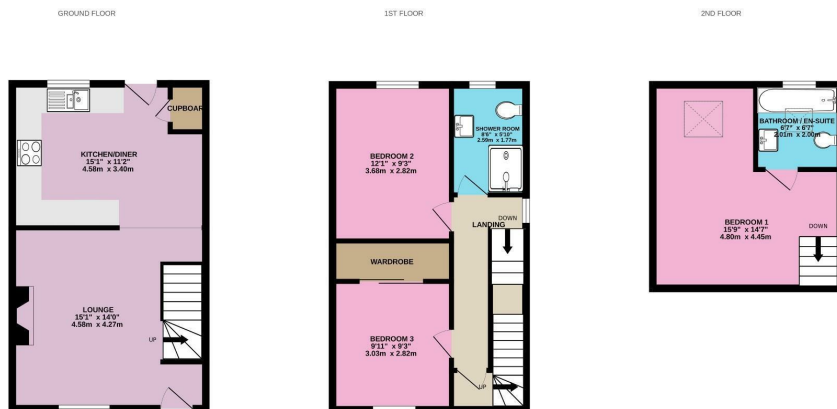
OFFERS IN THE REGION OF

£205,000

Towngate

Thurlstone, S36 9QY

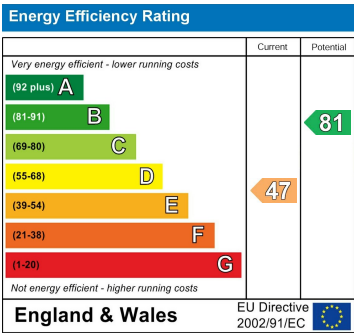




Whilst every attempt has been made to ensure the accuracy of the floorplan contained here, measurements of doors, windows, rooms and any other items are approximate and no responsibility is taken for any error, omission or mis-statement. This plan is for illustrative purposes only and should be used as such by any prospective purchaser. The services, systems and appliances shown have not been tested and no guarantee as to their operability or efficiency can be given.  
Made with Metrege 1/2024



Agents Note: Whilst every care has been taken to prepare these particulars, they are for guidance purposes only. All measurements are approximate and are for general guidance purposes only and whilst every care has been taken to ensure their accuracy, they should not be relied upon and potential buyers/tenants are advised to recheck the measurements



**OFFICE ADDRESS**  
 12 St Marys Street  
 Penistone  
 Sheffield  
 South Yorkshire  
 S36 6DT

**OFFICE DETAILS**  
 01226 766755  
 info@pennineproperty.co.uk