



The  
Pennine  
Property  
Group

The Pennine Property Group

For Sale

OFFERS IN THE REGION OF

£205,000

Bromley Bank

Huddersfield, HD8 8QG



## PROPERTY SUMMARY

Located in the sought-after Bromley Bank area, this property combines modern amenities with a touch of rustic charm, making it a perfect place to call home. Don't miss the opportunity to own a piece of tranquility in this lovely location. With charming Two double bedroomed accommodation, off road parking, private rear garden and offered for sale with no vendor chain we would recommend arranging an early viewing.

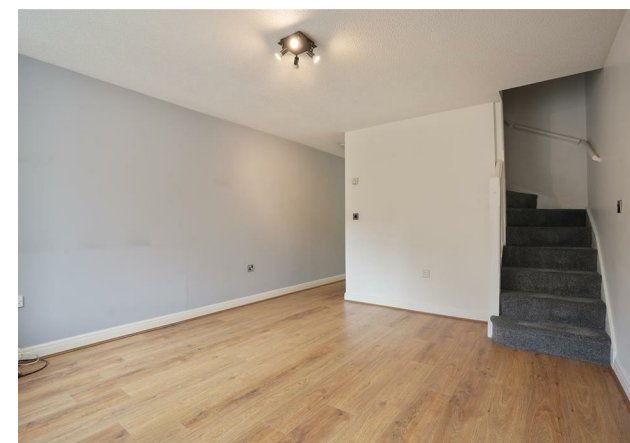
2



1



1







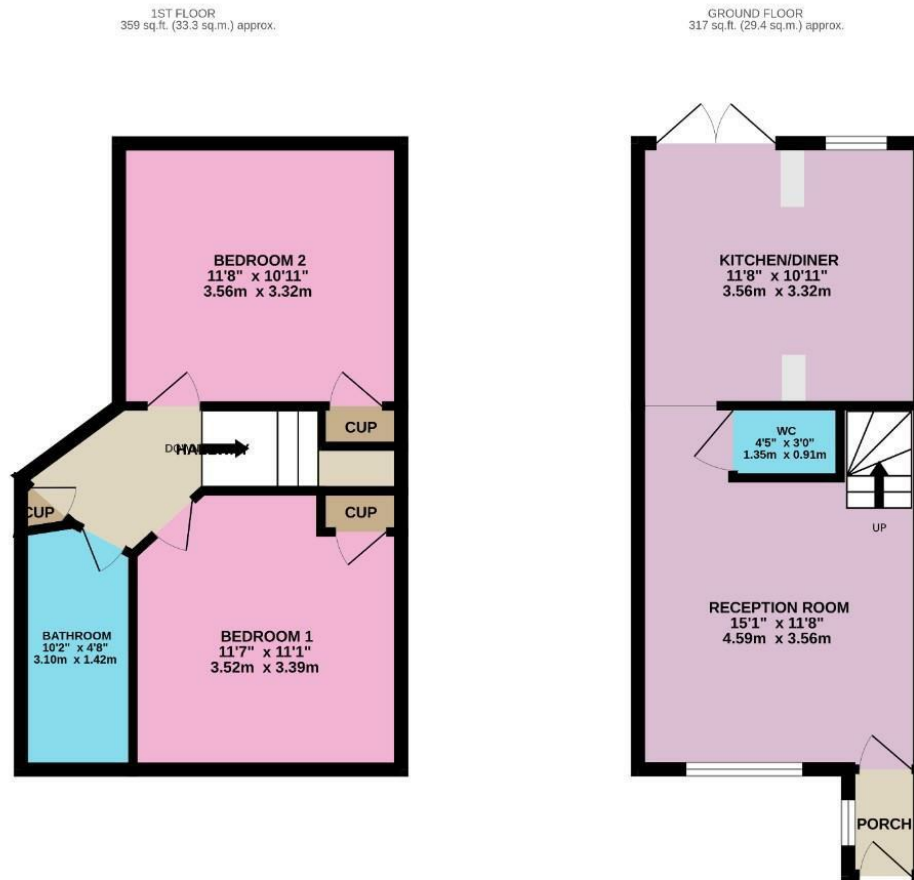










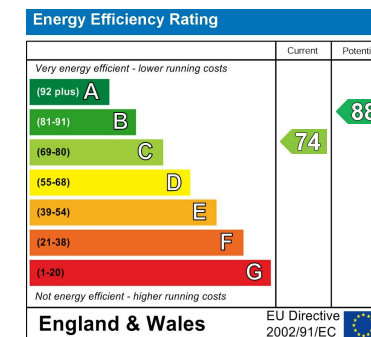


**LOCAL AUTHORITY**  
Kirklees

**TENURE**  
House - Terraced

**COUNCIL TAX BAND**  
B

**VIEWINGS**  
By prior appointment only



Agents Note: Whilst every care has been taken to prepare these particulars, they are for guidance purposes only. All measurements are approximate and are for general guidance purposes only and whilst every care has been taken to ensure their accuracy, they should not be relied upon and potential buyers/tenants are advised to recheck the measurements

**OFFICE ADDRESS**  
12 St Marys Street  
Penistone  
Sheffield  
South Yorkshire  
S36 6DT

**OFFICE DETAILS**  
01226 766755  
info@pennineproperty.co.uk