



The
Pennine
Property
Group

OFFERS IN THE REGION OF

£479,950

The Granary, Black Moor Farm

Oxspring, S36 8YR



PROPERTY SUMMARY

A stunning recently built four bedroomed home tucked away in picturesque Oxspring. Boasting superb quality throughout with spacious accommodation over three levels, offering a perfect blend of modern living within a charming rural setting. The countryside walks and views from this hamlet are excellent having ample private parking and south west facing garden areas. Offered for sale with No Vendor Chain.

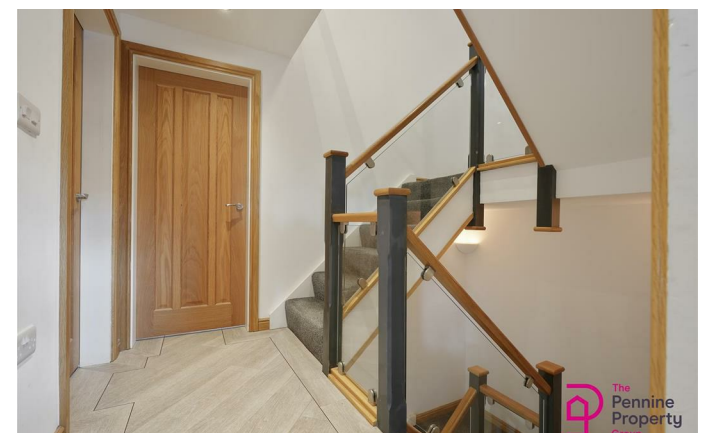
4



2



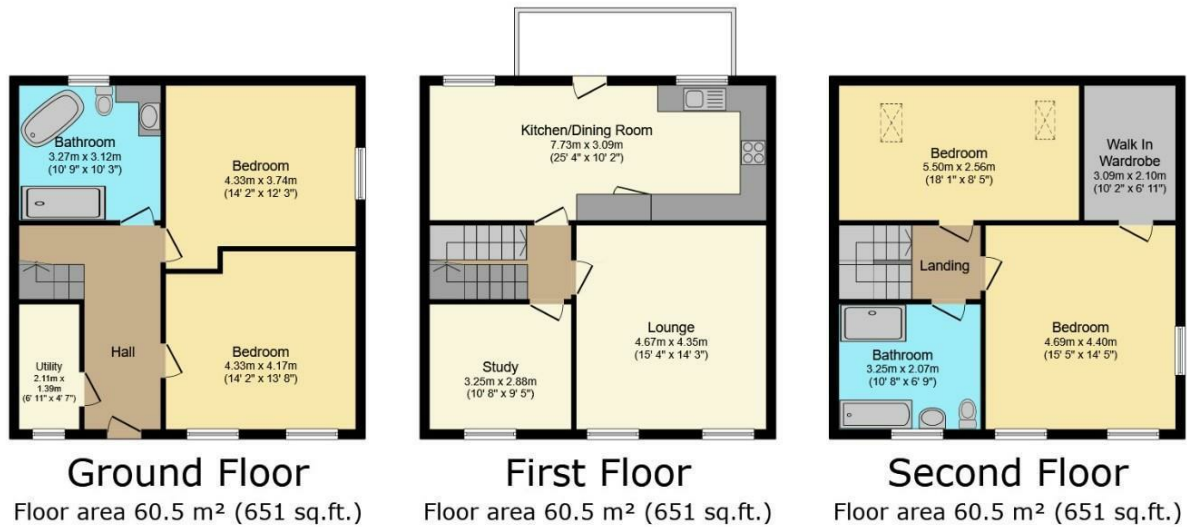
1











LOCAL AUTHORITY
BMBC

TENURE
Freehold

COUNCIL TAX BAND
C

VIEWINGS
By prior appointment only

Energy Efficiency Rating		Current	Potential
Very energy efficient - lower running costs			
(92 plus) A			
(81-91) B		75	82
(69-80) C			
(55-68) D			
(39-54) E			
(21-38) F			
(1-20) G			
Not energy efficient - higher running costs			
England & Wales		EU Directive 2002/91/EC	

Agents Note: Whilst every care has been taken to prepare these particulars, they are for guidance purposes only. All measurements are approximate and are for general guidance purposes only and whilst every care has been taken to ensure their accuracy, they should not be relied upon and potential buyers/tenants are advised to recheck the measurements

TOTAL: 181.6 m² (1,954 sq.ft.)

This floor plan is for illustrative purposes only. It is not drawn to scale. Any measurements, floor areas (including any total floor area), openings and orientations are approximate. No details are guaranteed, they cannot be relied upon for any purpose and do not form any part of any agreement. No liability is taken for any error, omission or misstatement. A party must rely upon its own inspection(s). Powered by www.Propertybox.io

OFFICE ADDRESS
12 St Marys Street
Penistone
Sheffield
South Yorkshire
S36 6DT

OFFICE DETAILS
01226 766755
info@pennineproperty.co.uk