



OFFERS IN THE REGION OF

£299,950

Birks Lane, Millhouse Green

Sheffield, S36 9NB

PROPERTY SUMMARY

This charming true two bedroomed bungalow has a superb position within the centre of Millhouse Green. Offered with no vendor chain. Don't miss out on the chance to make this property your own and experience the joys of village living near Penistone.

2



1



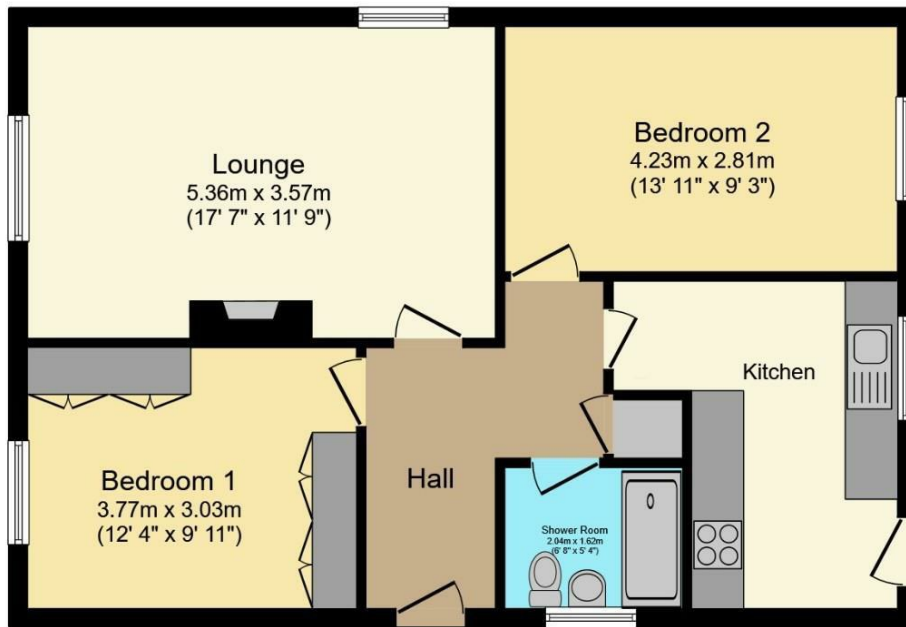
1





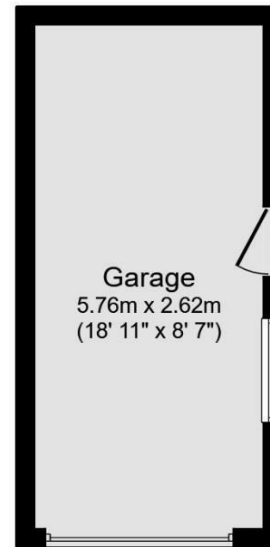






Floor Plan

Floor area 66.3 m² (714 sq.ft.)



Garage

Floor area 15.1 m² (163 sq.ft.)

LOCAL AUTHORITY

BMBC

TENURE

Bungalow - Detached

COUNCIL TAX BAND

C

VIEWINGS

By prior appointment only

Energy Efficiency Rating		Current	Potential
Very energy efficient - lower running costs			
(92 plus)	A		84
(81-91)	B		
(69-80)	C		
(55-68)	D		
(39-54)	E	41	
(21-38)	F		
(1-20)	G		
Not energy efficient - higher running costs			
England & Wales		EU Directive 2002/91/EC	

Agents Note: Whilst every care has been taken to prepare these particulars, they are for guidance purposes only. All measurements are approximate and are for general guidance purposes only and whilst every care has been taken to ensure their accuracy, they should not be relied upon and potential buyers/tenants are advised to recheck the measurements

TOTAL: 81.4 m² (877 sq.ft.)

This floor plan is for illustrative purposes only. It is not drawn to scale. Any measurements, floor areas (including any total floor area), openings and orientations are approximate. No details are guaranteed, they cannot be relied upon for any purpose and do not form any part of any agreement. No liability is taken for any error, omission or misstatement. A party must rely upon its own inspection(s). Powered by www.Propertybox.io

OFFICE ADDRESS

12 St Marys Street
Penistone
Sheffield
South Yorkshire
S36 6DT

OFFICE DETAILS

01226 766755
info@pennineproperty.co.uk