

OFFERS IN THE REGION OF

£310,000

6 Netherfield

Penistone, S36 7AA



PROPERTY SUMMARY

Situated in this exclusive small development superbly placed for the Grammar school and all of Penistone's amenities. The four bedrooomed accommodation on all 3 levels is superbly presented with an abundance of light enjoyed throughout. Parking for two to the front leading to the partially converted garage/utility area. The well stocked and colourful garden enjoys a southerly aspect with a useful shed for storage.

4



2



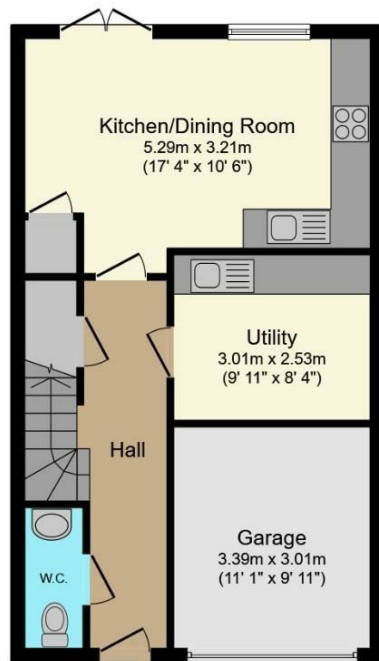
1





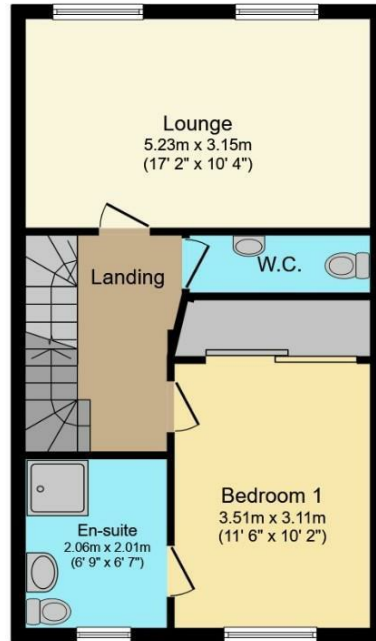






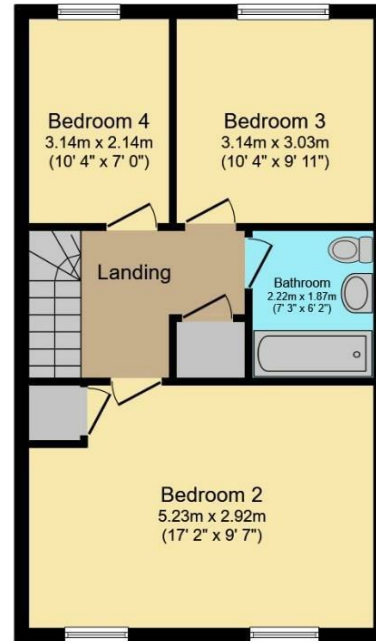
Ground Floor

Floor area 49.4 m² (531 sq.ft.)



First Floor

Floor area 49.3 m² (531 sq.ft.)



Second Floor

Floor area 49.4 m² (531 sq.ft.)

TOTAL: 148.1 m² (1,594 sq.ft.)

This floor plan is for illustrative purposes only. It is not drawn to scale. Any measurements, floor areas (including any total floor area), openings and orientations are approximate. No details are guaranteed, they cannot be relied upon for any purpose and do not form any part of any agreement. No liability is taken for any error, omission or misstatement. A party must rely upon its own inspection(s). Powered by www.Propertybox.io

LOCAL AUTHORITY

BMBC

TENURE

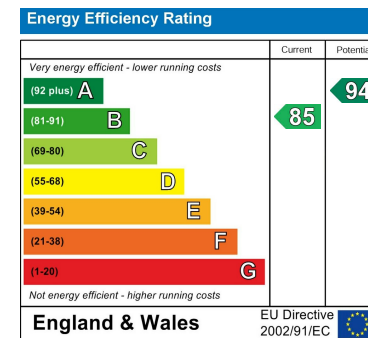
Freehold

COUNCIL TAX BAND

D

VIEWINGS

By prior appointment only



Agents Note: Whilst every care has been taken to prepare these particulars, they are for guidance purposes only. All measurements are approximate and are for general guidance purposes only and whilst every care has been taken to ensure their accuracy, they should not be relied upon and potential buyers/tenants are advised to recheck the measurements

OFFICE ADDRESS

12 St Marys Street
Penistone
Sheffield
South Yorkshire
S36 6DT

OFFICE DETAILS

01226 766755
info@pennineproperty.co.uk