



The
Pennine
Property
Group

OFFERS IN THE REGION OF

£195,000

Copster Close

Thurgoland, S35 7BQ



PROPERTY SUMMARY

Nestled in the charming village of Thurgoland, this delightful two-bedroom semi-detached house is a perfect find for first-time buyers or downsizer. Having two double bedrooms and a spacious living space including an open plan conservatory extension with excellent views from the southerly rear facing garden.

2



1



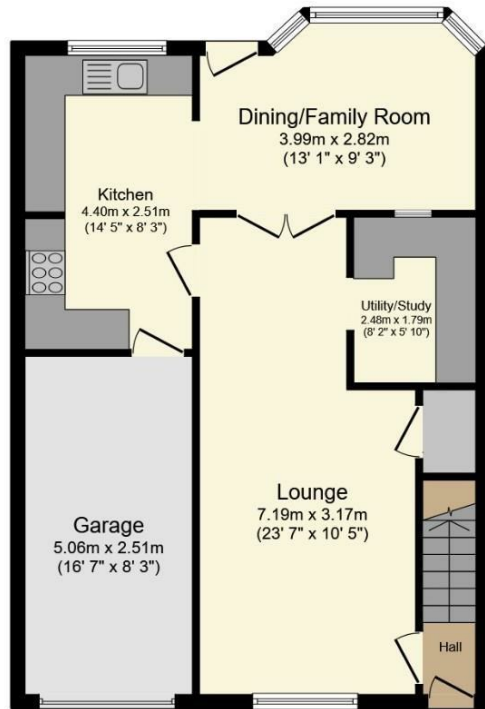
2



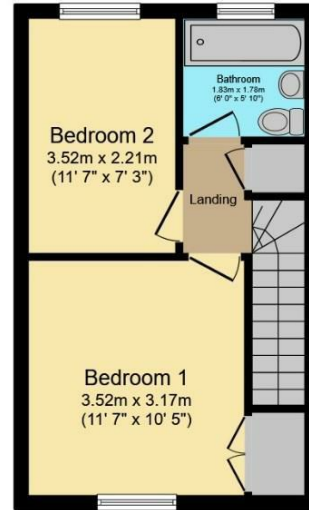








Ground Floor
 Floor area 65.8 m² (708 sq.ft.)



First Floor
 Floor area 29.6 m² (318 sq.ft.)

TOTAL: 95.3 m² (1,026 sq.ft.)

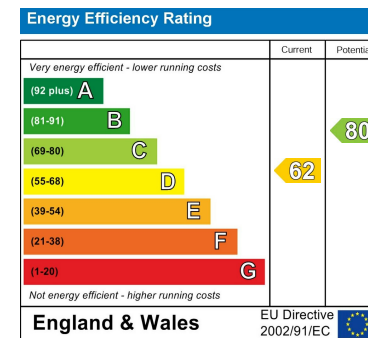
This floor plan is for illustrative purposes only. It is not drawn to scale. Any measurements, floor areas (including any total floor area), openings and orientations are approximate. No details are guaranteed, they cannot be relied upon for any purpose and do not form any part of any agreement. No liability is taken for any error, omission or misstatement. A party must rely upon its own inspection(s). Powered by www.Propertybox.io

LOCAL AUTHORITY
 BMBC

TENURE
 Freehold

COUNCIL TAX BAND
 B

VIEWINGS
 By prior appointment only



Agents Note: Whilst every care has been taken to prepare these particulars, they are for guidance purposes only. All measurements are approximate and are for general guidance purposes only and whilst every care has been taken to ensure their accuracy, they should not be relied upon and potential buyers/tenants are advised to recheck the measurements

OFFICE ADDRESS
 12 St Marys Street
 Penistone
 Sheffield
 South Yorkshire
 S36 6DT

OFFICE DETAILS
 01226 766755
 info@pennineproperty.co.uk