



OFFERS IN THE REGION OF

£335,000

Ingbirchworth Road

Thurlstone, S36 9QN



PROPERTY SUMMARY

This superb home has characterful accommodation enjoyed at each of its three spacious levels. 19th Century and Grade 2 listed the charm and history is oozing throughout. Located in the heart of this lovely traditional semi rural village a short distance to Penistone, with easy access to the Pennine Trail and stunning countryside walks available from the doorstep.

3



2



2





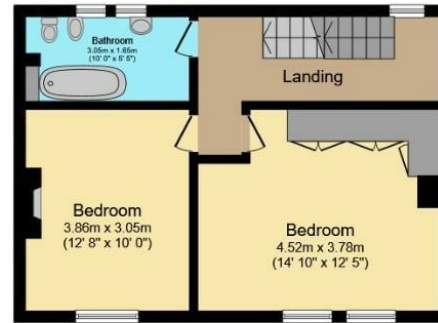






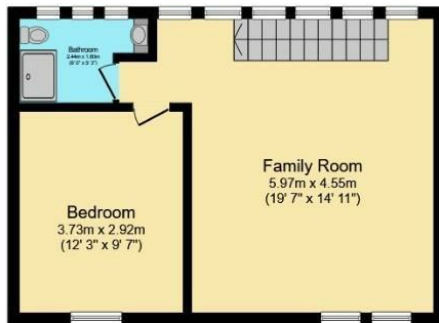
Ground Floor

Floor area 43.5 m² (468 sq.ft.) approx



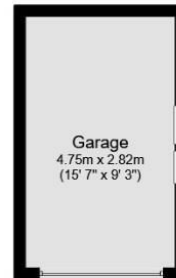
First Floor

Floor area 43.5 m² (468 sq.ft.) approx



Second Floor

Floor area 43.5 m² (468 sq.ft.) approx



Garage

Floor area 13.4 m² (145 sq.ft.) approx

Total floor area 144.0 m² (1,550 sq.ft.) approx

This plan is for illustration purposes only and may not be representative of the property. Plan not to scale.

LOCAL AUTHORITY

BMBC

TENURE

Freehold

COUNCIL TAX BAND

C

VIEWINGS

By prior appointment only

Energy Efficiency Rating		
	Current	Potential
<i>Very energy efficient - lower running costs</i>		
(92 plus) A		85
(81-91) B		
(69-80) C		
(55-68) D	60	
(39-54) E		
(21-38) F		
(1-20) G		
<i>Not energy efficient - higher running costs</i>		
England & Wales		EU Directive 2002/91/EC

Agents Note: Whilst every care has been taken to prepare these particulars, they are for guidance purposes only. All measurements are approximate and are for general guidance purposes only and whilst every care has been taken to ensure their accuracy, they should not be relied upon and potential buyers/tenants are advised to recheck the measurements

OFFICE ADDRESS

12 St Marys Street
Penistone
Sheffield
South Yorkshire
S36 6DT

OFFICE DETAILS

01226 766755
info@pennineproperty.co.uk