



The
Pennine
Property
Group



OFFERS IN THE REGION OF

£199,950

High Street

Penistone, S36 6BR



The
Pen
Pro
Group

PROPERTY SUMMARY

A substantial property, much larger than you would first expect. Having accommodation over four levels incorporating three bedrooms and two reception rooms, a lovely rear garden and a short walk into the centre of our fabulous market town.

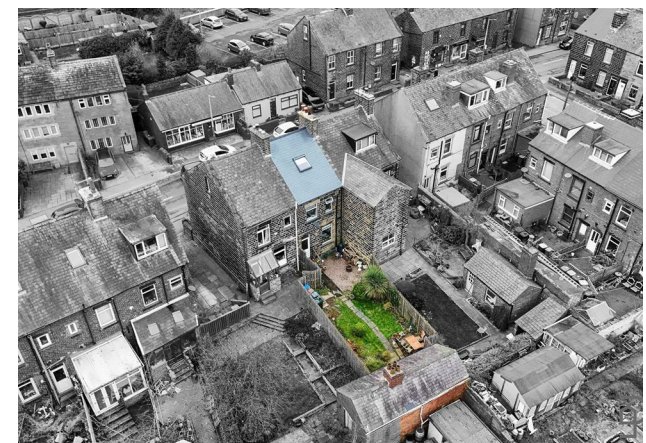
3



1



2







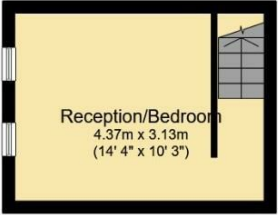


LOCAL AUTHORITY
BMBC

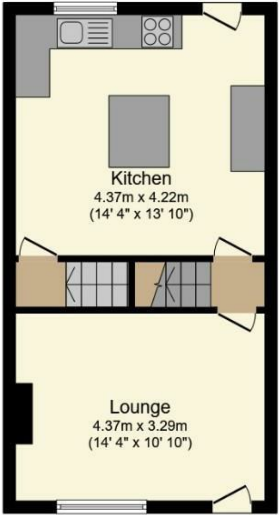
TENURE
Freehold

COUNCIL TAX BAND
A

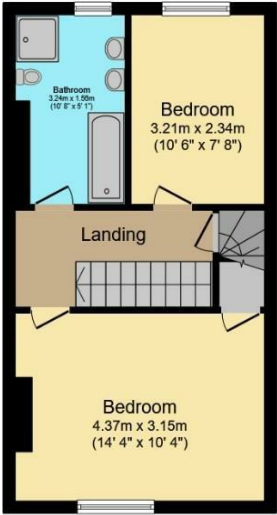
VIEWINGS
By prior appointment only



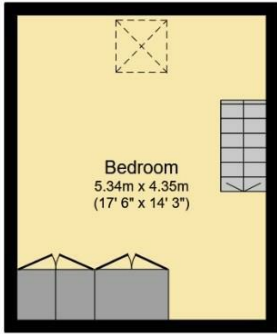
Lower Ground Floor
Floor area 14.4 m² (155 sq.ft.)
approx



Ground Floor
Floor area 37.1 m² (400 sq.ft.)
approx



First Floor
Floor area 37.1 m² (400
sq.ft.) approx



Second Floor
Floor area 23.3 m² (251 sq.ft.)
approx

Energy Efficiency Rating		Current	Potential
Very energy efficient - lower running costs			
(92 plus) A			83
(81-91) B			
(69-80) C			
(55-68) D		56	
(39-54) E			
(21-38) F			
(1-20) G			
Not energy efficient - higher running costs			
England & Wales		EU Directive 2002/91/EC	

Agents Note: Whilst every care has been taken to prepare these particulars, they are for guidance purposes only. All measurements are approximate and are for general guidance purposes only and whilst every care has been taken to ensure their accuracy, they should not be relied upon and potential buyers/tenants are advised to recheck the measurements

Total floor area 112.0 m² (1,205 sq.ft.) approx

This plan is for illustration purposes only and may not be representative of the property. Plan not to scale. Powered by PropertyBox

OFFICE ADDRESS
12 St Marys Street
Penistone
Sheffield
South Yorkshire
S36 6DT

OFFICE DETAILS
01226 766755
info@pennineproperty.co.uk