



OFFERS OVER

£550,000

Tivy Dale Drive

Cawthorne, S75 4EN



PROPERTY SUMMARY

A superb opportunity to live in this highly sought after and award winning village. This detached true bungalow is immaculately presented throughout with the most amazing rear outlook over adjoining fields and Cannon Hall in the distance. Having Three bedrooms, Two bathrooms and large conservatory it already offers a splendid array of accommodation however also enjoying the possibility of further extensions.

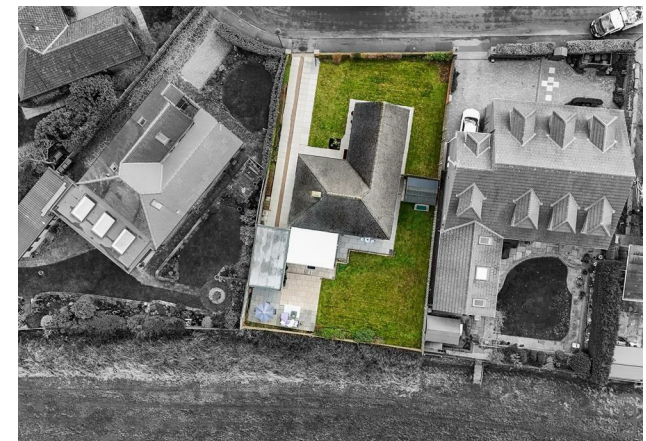
3



2



2











Floor Plan

Floor area 154.0 sq.m. (1,657 sq.ft.) approx

Total floor area 154.0 sq.m. (1,657 sq.ft.) approx

This plan is for illustration purposes only and may not be representative of the property. Plan not to scale. Powered by PropertyBox

LOCAL AUTHORITY

BMBC

TENURE

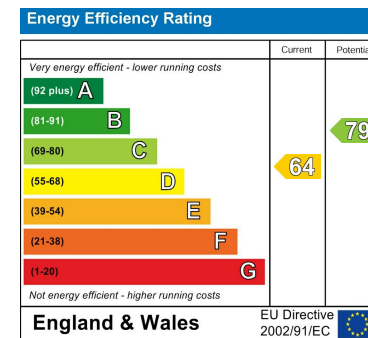
Freehold

COUNCIL TAX BAND

E

VIEWINGS

By prior appointment only



Agents Note: Whilst every care has been taken to prepare these particulars, they are for guidance purposes only. All measurements are approximate and are for general guidance purposes only and whilst every care has been taken to ensure their accuracy, they should not be relied upon and potential buyers/tenants are advised to recheck the measurements

OFFICE ADDRESS

12 St Marys Street
 Penistone
 Sheffield
 South Yorkshire
 S36 6DT

OFFICE DETAILS

01226 766755
 info@pennineproperty.co.uk