



The
Pennine
Property
Group

OFFERS IN THE REGION OF

£235,000

Vale View

Sheffield, S36 8YT

PROPERTY SUMMARY

A charming three bedroomed property offered with no vendor chain and available for immediate viewings. Located on the end of the row with field views to two aspects. Off road parking, large gardens and a truly stunning village location.

3



1



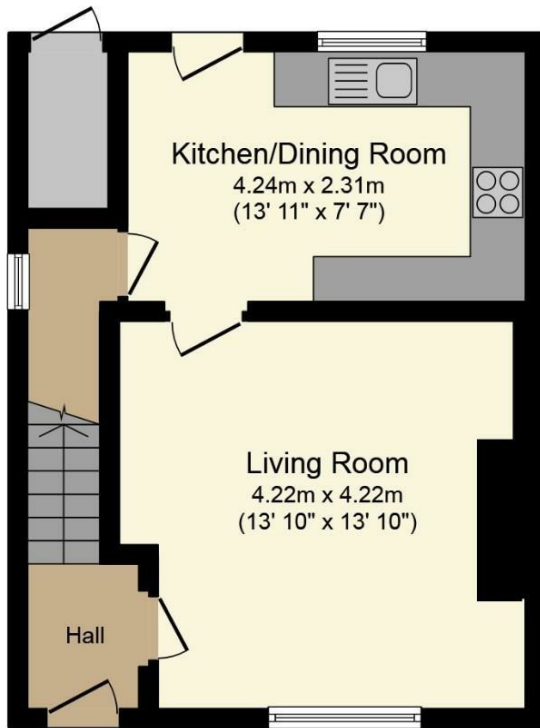
1



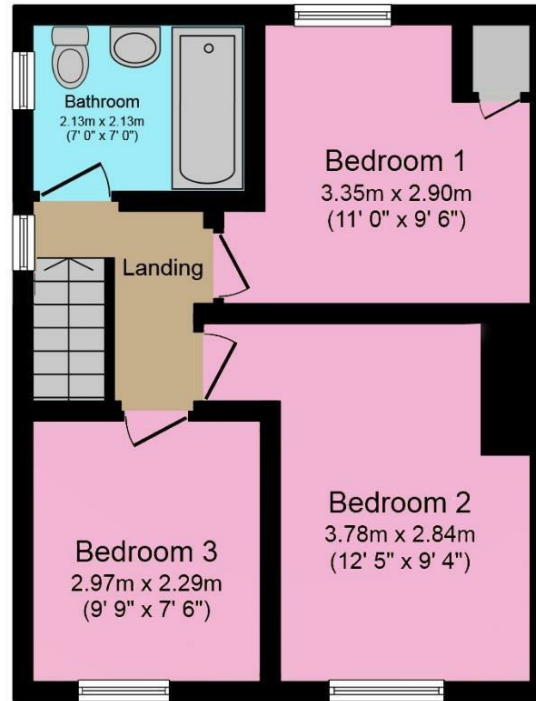








Ground Floor



First Floor

Total floor area 77.9 m² (838 sq.ft.) approx

This plan is for illustration purposes only and may not be representative of the property. Plan not to scale. Powered by PropertyBox

LOCAL AUTHORITY

BMBC

TENURE

House - End Terrace

COUNCIL TAX BAND

B

VIEWINGS

By prior appointment only

Energy Efficiency Rating		Current	Potential
Very energy efficient - lower running costs			
(92 plus)	A		86
(81-91)	B		
(69-80)	C		
(55-68)	D	66	
(39-54)	E		
(21-38)	F		
(1-20)	G		
Not energy efficient - higher running costs			
England & Wales		EU Directive 2002/91/EC	

Agents Note: Whilst every care has been taken to prepare these particulars, they are for guidance purposes only. All measurements are approximate and are for general guidance purposes only and whilst every care has been taken to ensure their accuracy, they should not be relied upon and potential buyers/tenants are advised to recheck the measurements

OFFICE ADDRESS

12 St Marys Street
Penistone
Sheffield
South Yorkshire
S36 6DT

OFFICE DETAILS

01226 766755
info@pennineproperty.co.uk