



The
Pennine
Property
Group



OFFERS IN THE REGION OF

£389,500

Kirkhill Bank

Penistone S36 9UX

PROPERTY SUMMARY

*** Unexpectedly Re-offered *** This is a truly stunning property, from your first steps into the hallway you feel at home. Superbly presented and maintained offering Four bedroomed detached accommodation with an open field aspect to the rear. Driveway and garage and available with No Vendor chain.

4



2



2

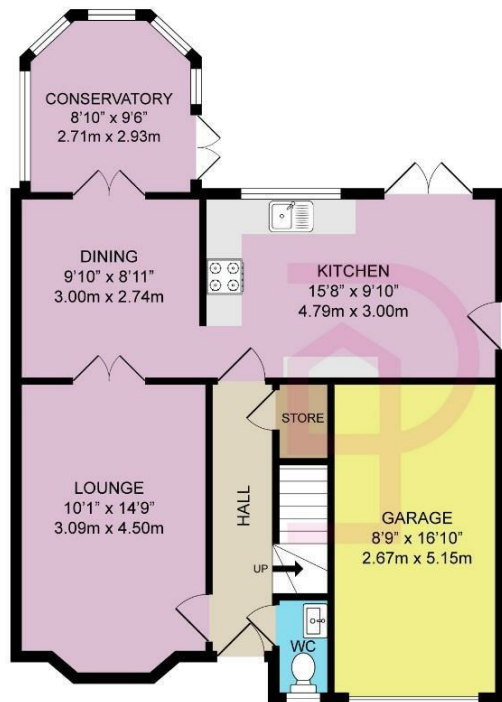




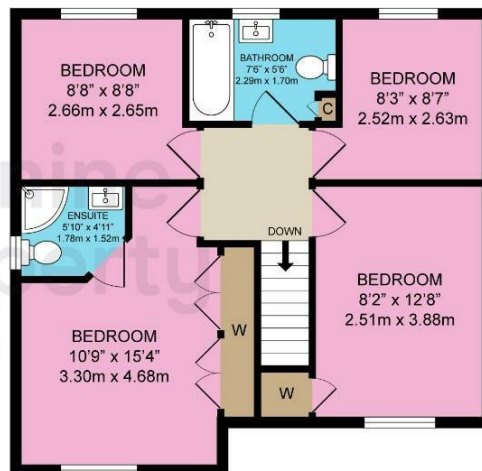




GROUND FLOOR
779 sq ft (72.4 sqm) approx.



1ST FLOOR
556 sq ft (51.7 sqm) approx.



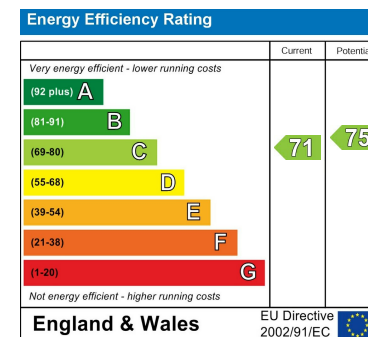
TOTAL FLOOR AREA: 1335 sq ft (124.1 sqm) approx.

LOCAL AUTHORITY
BMBC

TENURE
Freehold

COUNCIL TAX BAND
E

VIEWINGS
By prior appointment only



Agents Note: Whilst every care has been taken to prepare these particulars, they are for guidance purposes only. All measurements are approximate and are for general guidance purposes only and whilst every care has been taken to ensure their accuracy, they should not be relied upon and potential buyers/tenants are advised to recheck the measurements

OFFICE ADDRESS

12 St Marys Street
Penistone
Sheffield
South Yorkshire
S36 6DT

OFFICE DETAILS

01226 766755
info@pennineproperty.co.uk