



Ivy Cottage Stony Lane
Kilcot, Newent GL18 1NL



STEVE GOOCH
ESTATE AGENTS | EST 1985

Ivy Cottage Stony Lane

Kilcot, Newent GL18 1NL

Guide Price £575,000

A VERY INDIVIDUAL QUIRKY FOUR DOUBLE BEDROOM DETACHED STONE COTTAGE having **FLEXIBLE AND VERSATILE ACCOMMODATION** with **FOUR RECEPTIONS**, situated in a **MATURE PLOT AMOUNTING to 1/3 OF AN ACRE**, **DOUBLE GARAGE** and **AMPLE PARKING**, **DETACHED STONE BUILT WORKSHOP / STORE (FORMERLY THE FORGE)**, situated in the **VILLAGE OF KILCOT**.

The village of Kilcot has a public house and garage. The neighbouring town of Newent offers further amenities. These include a selection of Shops, Primary and Secondary Schools, Churches of various denominations, Health, Sports and Community centres and a Library. With a bus service to Gloucester, Ross-on-Wye and surrounding areas it offers a link to further services. The village of Gorsley can be found just a short distance away and offers amenities to include a shop with post office and coffee house, Primary School, public house, golf club, Baptist chapel, C of E Church. Another asset close by is the village of Aston Ingham which offers a Tennis, Cricket and Bowls Club, Village Hall as well as a Church.

For the commuter access can be gained to the M50 motorway (junction 3) approximately 3.5 miles away (from Newent) for connection with the M5 motorway, linking up the Midlands, and the North, Wales, London and the South.

Sporting and leisure facilities within the area include a choice of Golf Clubs, various forms of Shooting and Fishing, the Dry Ski Slope at Gloucester, active Rugby, Football and Cricket teams etc. etc.



Entrance via half glazed frosted door into:

ENTRANCE HALL

8'10 x 7'7 (2.69m x 2.31m)

Tiled flooring, single radiator, stairs to the first floor, side aspect window. Solid timber door through to:

SNUG

16'1 x 9'5 (4.90m x 2.87m)

Stone fireplace with inset wood burning stove, raised stone plinth to either side, double radiator, exposed ceiling timbers, front aspect window with a private outlook over the garden, fully glazed French doors to the front. Opening through to:

DINING ROOM

11'1 x 10'11 (3.38m x 3.33m)

Stone fireplace with raised hearth (presently blocked off), double radiator, exposed ceiling timbers, two rear aspect windows.

KITCHEN

11'11 x 9'6 (3.63m x 2.90m)

Belfast sink unit with mixer tap, cupboards under, range of base and wall mounted units, plumbing for washing machine, exposed ceiling timbers, side aspect window.

UTILITY

7'7 x 5'1 (2.31m x 1.55m)

Built-in cupboards for washing machine and tumble dryer, wall mounted units, tiled flooring, double radiator, half glazed frosted door through to the side.

FAMILY ROOM

14'7 x 13'5 (4.45m x 4.09m)

Vaulted ceiling, tiled flooring, corner wood burner, two double radiators, exposed stone walling, side aspect window, Velux roof lights. Fully glazed bi-fold doors through to the private south west facing rear garden. Door to:

REAR HALLWAY

Tiled flooring, fully glazed door to the front and rear.

GROUND FLOOR SHOWER ROOM

White suite comprising of close coupled WC, wash hand basin, tiled splashback, large double shower cubicle, shower, tiled surround, infrared electric heating.





STUDY

17'2 x 7'11 (5.23m x 2.41m)

Two infrared radiators, side and rear aspect windows with a private outlook over the gardens.

FROM THE HALLWAY, AN EASY TREAD STAIRWAY GIVES ACCESS TO THE FIRST FLOOR.

LANDING

BEDROOM 2

12'9 x 9'5 (3.89m x 2.87m)

Single radiator, front aspect window with a private outlook over the gardens.

BEDROOM 3

11'5 x 10'1 max (3.48m x 3.07m max)

Single radiator, rear aspect south west facing window with a private outlook over the gardens and fields beyond.

BEDROOM 4

11'6 x 8'7 (3.51m x 2.62m)

Attractive original brick fireplace, single radiator, exposed timbers, built-in wardrobe cupboard, hanging rail and shelving, side aspect window with a lovely private outlook onto open farmland.

BATHROOM

10'0 x 6'0 (3.05m x 1.83m)

Roll top bath with shower attachment over, close coupled WC, pedestal wash hand basin, cupboards below, bidet, single radiator, cupboard housing the Worcester gas-fired central heating and domestic hot water boiler, front aspect window with a private outlook over the gardens.

FROM THE FIRST FLOOR LANDING, STAIRS GIVE ACCESS TO THE SECOND FLOOR.

MASTER BEDROOM

22'9 x 12'9 (6.93m x 3.89m)

Exposed timbers, built-in cupboard, double radiator, access to roof space, two rear aspect south facing windows with a lovely outlook onto the gardens, fields and farmland beyond.

OUTSIDE

A resin driveway, suitable for the parking of three to four vehicles, leads through to:



ATTACHED DOUBLE GARAGE

19'0 x 16'2 (5.79m x 4.93m)

Accessed via up and over door, power and lighting, side aspect frosted window. Door through to:

SECOND UTILITY / WORKSHOP

15'2 x 7'3 (4.62m x 2.21m)

Fitted cupboards, power and lighting, part glazed door through to the rear.

The property has lovely gardens to the front and rear. To the front of the property, there is a large lawned area, flower borders surround with an abundance of shrubs, bushes, trees etc., original well with its own outside tap, outside lighting, walling and hedging surround, gated side access leads through to the lovely private south west facing rear garden with raised paved patio area, good sized lawn area, various shrubs, bushes and trees, including fruiting trees - plum, pear and apple, outside lighting, outside power points. There is a further gravelled garden area, greenhouse, garden shed and gated rear access via double gate ideal for caravan / motorhome, trailer, storage etc., natural hedge boundary making it private and secluded.

The front drive has parking for three to four cars.

On the opposite side of the lane, access is gained through to a further parking area for several cars with an original forge, ideal for workshop use, further garaging etc.

STONE-BUILT ORIGINAL FORGE

19'7 x 13'9 (5.97m x 4.19m)

Accessed via double doors, power and lighting, stable door through to the side, pitched tiled roof, two side aspect windows. Small lawned area to the front and rear.

SERVICES

Mains water, electric and gas, septic tank.

Fibre broadband is available at the property and is currently provided via BT.

WATER RATES

Severn Trent - to be confirmed.

LOCAL AUTHORITY

Council Tax Band: E

Forest of Dean District Council, Council Offices, High Street, Coleford, Glos. GL16 8HG.





TENURE

Freehold.

VIEWING

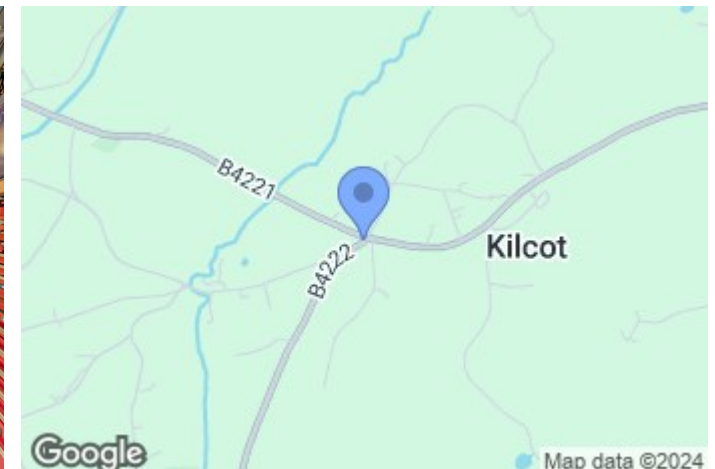
Strictly through the Owners Selling Agent, Steve Gooch, who will be delighted to escort interested applicants to view if required. Office Opening Hours 8.30am - 7.00pm Monday to Friday, 9.00am - 5.30pm Saturday.

DIRECTIONS

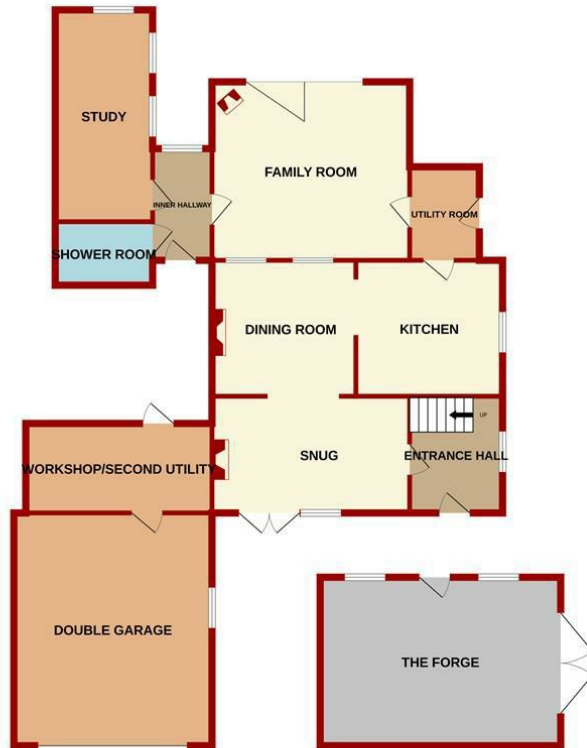
From Newent, proceed along the B4221 in the direction of Ross-On-Wye. Proceed into Kilcot, passing the pub on the right hand side. Proceed down the hill and you will see a small lane marked Stony Lane on your left hand side just before the crossroads. Turn left into Stony Lane and the property is the first property on your right hand side.

PROPERTY SURVEYS

Qualified Chartered Surveyors (with over 20 years experience) available to undertake surveys (to include Mortgage Surveys/RICS Housebuyers Reports/Full Structural Surveys).



GROUND FLOOR



1ST FLOOR



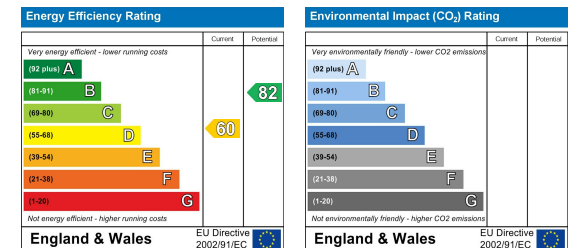
2ND FLOOR



Measurements are approximate. Not to scale. Illustrative purposes only
Made with Metropix ©2024

MISREPRESENTATION DISCLAIMER

All reasonable steps have been taken with the preparation of these particulars but complete accuracy cannot be guaranteed. If there is any point which is of particular importance to you, please obtain professional confirmation. Alternatively, where possible we will be pleased to check the information for you. These particulars do not constitute a contract or part of a contract. All measurements quoted are approximate. The fixtures, fittings and appliances have not been tested and therefore no guarantee can be given that they are in working order. Any drawings, sketches or plans are provided for illustrative purposes only and are not to scale. All photographs are reproduced for general information and it cannot be inferred that any items shown are included in the sale.





4 High Street, Newent, Gloucestershire. GL18 1AN | (01531) 820844 | newent@stevegooch.co.uk | www.stevegooch.co.uk

Residential Sales | Residential Lettings | Auctions | Surveys