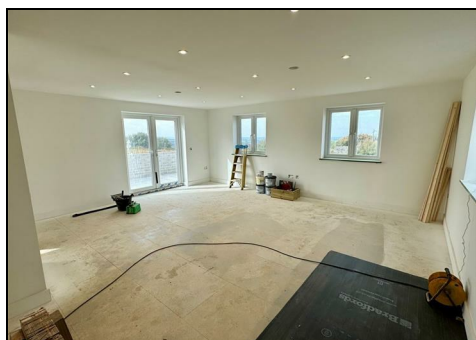


Ivy Cottage , St Columb, Cornwall TR9 6NQ



Brand new detached 3 bedroom house set in rural location and coming with large garden, parking and superb views.

£1,495 PCM



The property is unfurnished and is available from early November for 12 months. The deposit is equivalent to a month's rent.

To arrange a viewing on this or any of our other properties please complete the Tenancy Application Form on the Start and Co home page at starts.co.uk.

Energy Efficiency Rating		
	Current	Potential
Very energy efficient - lower running costs		
(92 plus) A		
(81-91) B		
(69-80) C		
(55-68) D		
(39-54) E		
(21-38) F		
(1-20) G		
Not energy efficient - higher running costs		
England & Wales		
EU Directive 2002/91/EC		

Environmental Impact (CO ₂) Rating		
	Current	Potential
Very environmentally friendly - lower CO ₂ emissions		
(92 plus) A		
(81-91) B		
(69-80) C		
(55-68) D		
(39-54) E		
(21-38) F		
(1-20) G		
Not environmentally friendly - higher CO ₂ emissions		
England & Wales		
EU Directive 2002/91/EC		

